



**FLAME**  
UNIVERSITY

The pioneer of liberal education in India  
With a mission to be at the leading edge of knowledge

A student community of doers  
Supported by a faculty community of experts

Imbibing interdisciplinarity  
Yet encouraging self-discovery

A nurturing and creative environment  
In a world-class campus for diverse interests

A research-oriented approach  
Driving change at the grassroots

Learning beyond the classroom  
Providing a real-world outlook and imparting life-long skills

Rooted in Indian context  
Yet global in nature

An experiential journey  
A lifelong association

THIS IS THE SPIRIT OF  
**EVERLASTING**

# WELCOME TO FLAME UNIVERSITY



**PROUD OF OUR  
PIONEERING ACHIEVEMENTS**

**CONFIDENT IN OUR  
DISTINCTIVE PRESENT**

**EXCITED ABOUT THE  
EVERLASTING FUTURE**





**At FLAME University, we strive to create an academic experience that fosters intellectual curiosity, a critical thought process, self-reflection, leadership and teamwork skills, a sense of commitment and professionalism, and a heightened sensitivity to one's socio-cultural environment. We lay emphasis on building a learning environment where the student takes the responsibility of learning and the teacher of facilitating the learning process.**

WE CALL  
THIS SPIRIT



*because we believe*

it's not just about what you learn here at FLAME;  
it's about how these experiences will continue to  
benefit you for years to come.



# ENDURING VISION

We encourage creators and doers to forge their own journeys and become true pathbreakers.

Being the pioneer of liberal education in India, FLAME delivers the country's premier interdisciplinary education experience. FLAME University envisions to be an aspirational destination for students and faculty, to transform the design and nature of studies, and to lead societal advancement through liberal education and informed leadership.

The story of our establishment, our ongoing endeavours and our future purpose is one of philanthropic impact creation by providing a platform for learning, thinking, and advancement of knowledge.

Since inception, our community has not just embraced the ever-changing world but has also contributed to its evolution.

# PHILANTHROPY AT WORK

---





The history of FLAME University's founding is one of philanthropic impact creation. FLAME University was conceptualized with a desire to give back to society and an aspiration of creating a unique and pioneering liberal education institution in India that promoted a diversity of viewpoints. The spirit of philanthropy at FLAME embraces the tenets of "Jnana-dana" (donating knowledge). Everlasting impact, accumulation of knowledge being intrinsic to human beings, and the 'multiplier' effect of education affecting more than just the educated individual are central to its philanthropic foundations. Having a philanthropic approach in all its actions allows FLAME to continually innovate and be at the cutting-edge of knowledge creation and dissemination.

FLAME commenced as an experiment to enhance formal syllabus-bound education with progressive methodology. Emphasizing the underlying unity of all knowledge, it adopted an interdisciplinary perspective towards the arts, humanities, social, physical and natural sciences. With the goal to develop multi-dimensional thinking, it first took steps to blend traditional liberal arts education with business and communication management and subsequently enhanced its interdisciplinary approach by complementing it with computing, data science, and design. Liberal education as imagined by FLAME lays stress upon the importance of interdisciplinary scholarship and self-reflection, with the freedom to exercise choice and learn through experience.

Benchmarked against the best globally, FLAME is deeply rooted in the Indian context, sensitive to the needs of the country in particular, and of the world in general, focusing on creating leaders for maximum social impact. FLAME exemplifies the true spirit of 'Make in India' providing an alternative to leading universities abroad.

FLAME University sees itself as an outstanding place of scholarship. It is a platform that brings together renowned policy makers, bureaucrats, industry professionals and academicians enabling inspired teaching and research. It is a center for excellence, where ideas are exchanged, curiosity is kindled, and minds are molded. It is an abode of new thoughts, broader horizons, and self-reflection.

While the journey so far has been rewarding, FLAME will continue on its ambitious path of being a world-class centre for learning committed to help build the India of the 21<sup>st</sup> century.

# FLAME AT A GLANCE

**10+**

Centres of  
Excellence

**100,000 SQ.FT.**

World-Class Sporting  
Facilities

**65+**

Learning  
Spaces

**70**

Acre Campus

**33,000**

Databases and e-journals

Library with  
**55,000+**  
Books

**05**

Interdisciplinary  
Schools

**350+**

Major-Minor  
Combinations

**425**

Unique  
Courses

**15:1**

Student:  
Faculty Ratio

**35:65**

Male:Female  
Student Ratio

**1/3<sup>rd</sup>**

Students on  
Scholarships

**170+**

Faculty  
Scholars

**100+**  
Student Events

**40+**  
Student Clubs

- Accepted into the coveted **CFA University Affiliation Program**
- Association with global institutes like **Wellesley College, Amherst College, Yale University, Indiana University - Bloomington, IE University, Sciences Po**, among many others
- Only Indian university member in the **Global Liberal Arts Alliance**
- Knowledge Partnership with the **Capacity Building Commission**
- Only Indian university to be covered as a case study by **University of Oxford's Impact Finance Project**
- **Collaboration with Maharashtra State Faculty Development Academy** to train faculty of universities and colleges from across Maharashtra
- **Campus design by Vastu Shilpa Consultants**, founded by revered architect late Mr. B.V. Doshi, recipient of the Pritzker Prize
- Only **international home of the Library of Mistakes**, Edinburgh
- **CRISIL national A\*\* rating** for the MBA Program
- The FLAME University campus has received a **platinum rating from the Indian Green Building Council**



Accredited with

**NAAC  
GRADE A++**



An **ISO 21001:2018**  
and **ISO 9001:2015**  
certified educational  
organization

**QS I-GAUGE**

**E-LEAD CERTIFIED**  
E-Learning  
Excellence for  
Academic  
Digitization

Overall **Diamond**  
rating

**Platinum**  
in Liberal Arts  
and Humanities







# VENERABLE LEADERSHIP

FLAME's leadership consists of highly revered and accomplished individuals who have the fiduciary duty of upholding the objects of the university. They are the guiding force, devoting their energy to keeping FLAME at the forefront of innovative education and cutting-edge research.

In an increasingly interconnected world, the university's leadership truly believes in the transformative power of liberal education in producing ethical leaders for the betterment of our society.

# OUR LEADERSHIP

---

With decades of experience, FLAME University's leadership team has demonstrable capacity and a track record of translating vision into action. The leadership team is committed to fulfilling FLAME's mission to provide a learning experience that will nurture and enable the development of learners as creative and critical thinkers, problem solvers, and active and responsible citizens equipped for lifelong learning.



### **Prof. Dishan Kamdar**

*PhD, National University of Singapore*

With an illustrious career spanning two decades, Prof. Kamdar has served in numerous leadership roles in the industry and within academia. Before FLAME, he was the Deputy Dean of Academic Programmes and Professor of Organizational Behavior at the Indian School of Business (ISB). He also contributed as a professor at the National University of Singapore (NUS).

As part of his industry impact, he trains senior executives from PSUs and the Government. Some of the organizations where he has taught and consulted include Novartis Healthcare, Facebook, Ernst & Young, The Walt Disney Company, Cadbury, GE Healthcare, Infiniti Retail, The Ministry of Defence, Indian Police Service, LIC, ONGC, Nokia, Bajaj Allianz, Wockhardt Hospitals, Standard Chartered Bank, Axis Bank, American Express, Bank of Baroda, Airtel, Bennett Coleman & Co., and Star India.

Prof. Kamdar is cited as one of India's top researchers and among the leading ones globally. He has published papers in top-tier international journals and has been invited to present his studies at international conferences. His research interests include work-related performance and extra-role behaviors that are both 'promotive' and 'prohibitive', knowledge sharing, group performance, trust, a voice in the organization, whistleblowing, creativity and leadership, work culture, and more.



### **Prof. M.A. Venkataramanan**

*PhD in Business Analysis, Texas A&M University, USA*

#### ***Acting Dean - Faculty of Business***

With a distinguished career spanning several decades, Prof. Venkataramanan has made significant contributions to both academia and administration. He joined the Kelley School of Business faculty in 1987, the same year he received his doctorate. He has held numerous leadership roles, including Chair of the Operations and Decision Technologies Department (1997-2003), Lawrence D. Glaubinger Chair of Business Administration and Chair of Undergraduate Programs (2005-2009), and Associate Dean of Academic Programs (2009-2012). In October 2012, he was appointed Vice Provost for Strategic Initiatives at Indiana University Bloomington, later becoming Vice Provost of Finance and Strategy in 2016, and Executive Vice Provost for Finance, Budget, and Strategy in 2021.

In his leadership roles, Prof. Venkataramanan has been instrumental in developing the fiscal strategy for the campus, managing the budget process for all academic units, and overseeing fiscal operations and program management for campus auxiliaries. He has also spearheaded strategic initiatives, including enhancing globalization opportunities for faculty and students, creating new graduate multidisciplinary programs and online graduate certificates and degrees, optimizing campus funding models, and formulating fiscal and organizational strategies to achieve key university goals.

His research and teaching interests lie in operations and supply chain management, decision support systems, and optimization techniques. Dr. Venkataramanan has published over fifty research articles in leading journals and authored a book. He has developed innovative curricula and received more than ten teaching-related awards.





### Dr. Virender Sharma

*PhD in Education, University of Pune*

Dr. Sharma brings over three decades of experience and expertise in academic administration to the institution, having worked with some of the country's leading and premier educational institutions. Before joining FLAME, he was the Head of Administration at the National Institute of Bank Management (NIBM), Pune, for over ten years. Prior to that, he held the position of Registrar at the National Defence Academy (NDA), Pune. Dr. Sharma's experience in academic administration over the past three decades has been marked by transparency, openness, visibility, and accountability. His academic interests, and in particular, his association with the Oxford University Press, continue to equip him with ideas, commitment, and a shared understanding of the enterprise of institution building.

## Deans | Associate Deans | Assistant Deans



### Prof. Santosh Kudtarkar

*PhD, Institute of Mathematical Sciences (MATSCIENCE), Chennai*

#### ***Dean - Faculty of Liberal Education***

A Theoretical Physicist by training, Prof. Kudtarkar has been associated with FLAME since its inception. His research interests are in applications of field theory in High Energy and Condensed Matter Physics, Dynamical Systems, and Mathematical Modelling in the Social and Management Sciences. He is passionate about Quantitative Models and has completed multiple industrial projects.

His consulting domain of expertise lies in the development, testing, validation, and deployment of Mathematical, Statistical and Machine Learning models for Consumer Research, Demand Forecasting and Optimisation.



## **Prof. Manoranjan Dash**

*PhD in Computer Science, National University of Singapore*

### **Dean - Faculty of Computing and Data Sciences**

With an illustrious career spanning over three decades in academia and industry, Prof. Dash specializes in Artificial Intelligence (AI), Machine Learning, Statistical Data Analysis, and Deep Learning. His expertise includes developing deep learning algorithms using programming languages such as Python, R, Java, MATLAB, and C. Prof. Dash holds a Doctorate and Master's Degree in Computer Science from the National University of Singapore, along with a Bachelor's in Computer Science and Engineering from the National Institute of Technology, Rourkela. He also completed a Postdoctoral Fellowship at Northwestern University, USA.

Previously associated with the Singapore Data Science Consortium, Institute for Infocomm Research, Nanyang Technological University, and the National Institute of Technology, Rourkela, Prof. Dash has made a significant impact on research. With an H-index of 28 and an H10-index of 40, some of his papers have been cited over 1,000 times. His contributions have earned him recognition among the world's Top 2% Scientists by Stanford University, and his paper "Feature Selection for Clustering" (co-authored with H. Liu) won the Most



## **Prof. Hyokjin Kwak**

*PhD in Marketing, The University of Georgia*

### **Dean - Faculty of Communication**

A Marketing expert with an esteemed career spanning two decades, Prof. Kwak specializes in strategic branding, advertising effects, and the integration of artificial intelligence (including machine learning, deep learning, and natural language processing) in marketing. He holds a Doctorate in Marketing from The University of Georgia and a Master's in Advertising from both The University of Georgia and Chung-Ang University, Seoul. He also holds a Bachelor's in Industrial Engineering from Seoul National University of Science & Technology.

He has held notable positions, including IIMA Chair Professor at IIM Ahmedabad and Professor of Marketing at Drexel University's LeBow College of Business, where he was recognized as Dean's Research Fellow and Distinguished Teaching Fellow. Prof. Kwak's global academic influence includes associations with Norwich Business School, University of Amsterdam, and Waseda University.

A prolific researcher, Prof. Kwak's work has been published in leading journals such as the Journal of Marketing, Journal of the Academy of Marketing Science, and the International Journal of Research in Marketing. He serves as Senior Associate Editor for the International Journal of Advertising and is on the editorial boards of other leading marketing journals. Previously, he was also the Editor-in-Chief of the Journal of Global Scholars of Marketing Science.



## **Prof. Amit Kundal**

*PhD in Human Centred Design, IIT Kanpur*

### ***Associate Dean - Faculty of Design, Art and Performance***

Prof. Kundal comes with over a decade of experience in design and academia. He has been an Associate Professor at ISDI, Mumbai, and has led the School of Product and Strategic Innovation as an Associate Dean. He was also associated with Asmara International and Li and Fung India Pvt. Ltd. as a designer. Before this, Prof. Kundal also co-founded Studio Twenty-Three.

Prof. Kundal's passion and current work span design research, re-imagining user journeys, and edifying design and business innovation tools for strategic design innovation. He is also actively involved with the global design thinking movement and, lately, has been writing about the intersection of design and hands-on research practice.



## **Prof. Andrea Phillott**

*PhD in Biology, Central Queensland University, Australia*

### ***Associate Dean - Faculty of Liberal Education (Foundation Year & FLAME Scholars Program)***

Prof. Phillott has broad experience as a field and laboratory research biologist with a specialized research focus on the biology and conservation of sea turtles and other marine megafauna in South and Southeast Asia and Australia. She applies research methods from the biological and social sciences to understand threats to wildlife and habitats, their sociocultural importance, and conservation needs, and to design and assess conservation practices.

Her most current research assesses sea turtle hatchery management practices and other factors affecting hatchling production and turtle-fisher interactions.



## **Prof. Viraj Shah**

*PhD in Archaeology, Deccan College Postgraduate and Research Institute, Pune*

### **Associate Dean - Programs**

Prof. Shah is an archaeologist specializing in ancient Indian art, architecture, and iconography and socio-religious history. Her doctoral dissertation has been published under the title of 'Jaina Rock-cut Caves of Western India'. Her postdoctoral research has been on temple institutions in medieval Maharashtra and archaeological remains in the coastal areas of Konkan.

She has published several research papers in national and international journals and edited volumes. Her research areas of interest are socio-economic-religious history, religious architecture, iconography, and pilgrimage and landscape studies.



## **Prof. Prasad Pathak**

*PhD in Geography, University of North Carolina at Greensboro, USA*

### **Associate Dean - Research**

Prof. Pathak is a physical geographer with a specialization in Remote Sensing and Geographic Information Systems. For his doctoral work, he studied glacial lakes in arctic Alaska for changes in their trophic structure and their links with surrounding landscapes.

He has also worked with the Centre for GIScience at UNCG as a postdoctoral fellow, where he was involved in various research projects, the development of research proposals, preparing manuscripts, and developing and conducting GIS training workshops. In India, he has worked with several reputed institutes, both government and private.



## **Prof. Aparna Shankar**

*PhD in Health Psychology, University of Leeds, UK*

### **Assistant Dean - Doctoral Program**

Prof. Shankar has a background in research on the health and well-being of older adults, with a focus on the role of social relationships, using data from ageing cohorts. Her other research interests include the patterning of health behaviors and the role of the environment on health, and inequalities in access to care.





## **Prof. Poonam Gandhi**

*PhD in Sociology, M.S. University, Baroda*

### ***Assistant Dean - Experiential Programs***

Prof. Gandhi's teaching career spans more than two decades. She has taught several sociology courses to postgraduate and undergraduate students in the Department of Sociology and the Department of Human Development and Family Studies at the M.S. University of Baroda. She was also a visiting faculty at IGNOU, Women's Study Research Centre, Social Work, and the Medical College of the M.S. University of Baroda.

Prof. Gandhi has worked on projects funded by the Ford Foundation, SEWA (Self Employed Women's Association) MHT, Ahmedabad, NACO-National Aids Control Organization and was a co-investigator on a project commissioned by the Gujarat Council of Elementary Education (GCEE) India. She has to her credit several research papers published in peer-reviewed national and international journals, as well as chapters in edited books. She has also published a book, 'The World of contemporary fine artists- An Exploration in Sociology of Art'. Her areas of research interest are Sociology of Art and Culture, Sociology of Gender and Family, Urban Heritage and Social Gerontology.



## **Prof. Bharat Damani**

*PhD in Nurturing Social Enterprises and Entrepreneurship, IIT Bombay*

### ***Assistant Dean - Faculty of Business***

Prof. Damani has worked with manufacturing start-ups and scaling businesses for their fund, non-fund and strategic needs since 1986. He has experience in lending, investing, turnarounds, acquisitions, investment banking and consulting roles. Among other assignments, he has consulted various Indian and Japanese companies for joint venture partner identification, location selection, evaluating market potential, credit assessment, business valuation and exits. He also mentors entrepreneurs from their product development phase to the scaling up phase. Prof. Damani has created The CESS Framework to help nurture start-ups and social enterprises to become cash-flow sustainable. He also created a board game, Masti - A Life Simulation Game, to create awareness about social entrepreneurship.



## **Prof. Tannistha Samanta**

*PhD in Sociology, University of Maryland, USA*

### ***Assistant Dean - Faculty Search and Development***

With over a decade of experience, Prof. Samanta was associated with IIT-Gandhinagar, and the Indian Institute of Health Management, Jaipur. Her research falls at the interdisciplinary crossroads of sociology and gerontology, blending quantitative and interpretive approaches. She examines questions relating to intergenerational relationships, sexual and reproductive health, social capital, and the role of culture. She has published in international journals in sociology, gerontology, and population studies.

Currently, she serves as a co-editor of the journal of Anthropology & Aging (the official journal of the Association for Anthropology, Gerontology & the Life Course) and is an editorial board member of the journal, The Sociological Review (SAGE).



## **Prof. Preetha Menon**

*PhD in Management Studies, IIT Madras*

### ***Assistant Dean - Faculty Search and Development (Management Programs)***

Prof. Menon holds a doctorate degree in Management Studies from Indian Institute of Technology (IIT) Madras. Her current research includes consumer neuroscience and experimental research on advertising and branding topics. She is well published in international journals of repute like European Journal of Marketing, Journal of Strategic Marketing, International Journal of Innovation Science, Media Watch amongst others.

She is a part practitioner and part academician with over 13 years of work experience. As a practitioner, during her advertising agency stint, she has worked with clients like Taj Hotels, Madura Garments (Louis Phillipe, Van Heusen and Allen Solly) and 3M amongst others. She has been involved in mentoring start-ups for creating workable marketing solutions as the CII's India Innovation Initiative 2017 Ambassador. She has also worked on consulting assignments for Mahindra and Mahindra, Bajaj Auto, and Evonix Technologies.



## **Prof. Aileen Blaney**

*PhD in Film Studies, Trinity College, Dublin, Ireland*

### **Assistant Dean - International Relations**

Prof. Blaney has completed her PhD from Trinity College, Dublin in the field of Film Studies. She is a writer and an editor. Her scholarship has explored Irish cinema and, more recently, examines photography in India and the photo-based image online. Her writing has appeared in peer-reviewed journals such as *Photography and Culture*, *Philosophy of Photography*, *History & Memory*, *European Journal of Cultural Studies*, *European Journal of Women's Studies*, *Film and Image Studies* and on popular news sites such as *The Wire*, *The Business Post* and *Huffington Post*. She is the co-editor of *Photography in India: from Archives to Contemporary Practice* (Bloomsbury/2019; Routledge/2020).



## **Prof. Shweta Rana**

*PhD in Microbiology, Punjab Agricultural University, Ludhiana*

### **Assistant Dean - Student Life**

With a distinguished career in academia, Prof. Rana serves as the Head of the Department of Physical and Natural Sciences and Associate Professor of Biology and Environmental Studies at FLAME University. She holds a Master's and Doctorate in Microbiology with a minor in Biochemistry. She has been honored with a Gold Medal and Certificate of Excellence in Academics by the Council of Scientific & Industrial Research (CSIR), Government of India. She also received a merit scholarship from her university and the Ministry of Home Affairs, Government of India, for her doctoral studies, and was awarded a Post-Doctoral Fellowship on the Rice Genome Project funded by the Department of Science and Technology (DST), Government of India.

Prof. Rana brings over twenty years of experience in teaching and research at prestigious academic institutions in India. Her research interests include Plant Sciences, Biodiversity Studies, Sustainable Agriculture and Food Production, Environmental Health, and Citizen Science. She has published and reviewed numerous articles and currently serves as a reviewer for journals such as *Environmental Science and Pollution Research* (Springer Nature), *Journal of Biotechnology* (Elsevier), *Environmental Sustainability* (Springer Nature), and *Journal of Phytology*.

For the past 14 years, Prof. Rana has been a vital part of FLAME University, significantly contributing to the development of programs, curricula, and teaching resources in her department. She is passionate about designing workshops, practicals, and scientific activities that enhance students' conceptual understanding. Prof. Rana has also established science labs, from designing workstations to procuring and installing lab instruments and equipment. In addition to her administrative responsibilities, she has chaired the Discover India Program and Developmental Activity Program, which are flagship initiatives of FLAME University. She has spearheaded activities that align with the university's core value of ecological balance.



# OUR COMMUNITY OF ACTIVE AND ACCOMPLISHED FACULTY SCHOLARS

---

FLAME faculty is an accomplished group of scholars and researchers whose teaching is augmented by the contemporariness of their academic knowledge and real-world experience. Not only are they eminently capable teachers, but also compassionate mentors to students. The faculty also includes members with outstanding international education backgrounds, scholarship, experience and orientation.

FLAME believes in staying at the leading edge of knowledge and finding answers to questions that drive change. Therefore, our academic community is constantly engaged in building curricula that are in line with the ever-changing dynamics of the real world.



**Our faculty are the alumni of some of the best known national and international institutes:**

**UNIVERSITY OF CAMBRIDGE**

**UNIVERSITY OF PENNSYLVANIA**

**STANFORD UNIVERSITY**

**CORNELL UNIVERSITY**

**UNIVERSITY OF AUCKLAND**

**UNIVERSITY OF SOUTHERN CALIFORNIA**

**UNIVERSITY OF CHICAGO**

**ECOLE DES HAUTES ETUDES EN SCIENCES SOCIALES, FRANCE**

**UNIVERSITY OF CALIFORNIA**

**UNIVERSITY OF NORTH CAROLINA AT CHAPEL HILL**

**UNIVERSITY OF MICHIGAN**

**NATIONAL UNIVERSITY OF SINGAPORE**

**UNIVERSITY OF TEXAS AT AUSTIN**

**MACQUARIE UNIVERSITY**

**UNIVERSITY OF ILLINOIS AT  
URBANA CHAMPAIGN**

**IIT - BOMBAY, DELHI, MADRAS, KANPUR**

**LONDON SCHOOL OF ECONOMICS**

**IIM - AHMEDABAD, BANGALORE**

**BABSON COLLEGE**

**IISC BANGALORE**

**ERASMUS UNIVERSITY ROTTERDAM**

**UNIVERSITY OF BIRMINGHAM**

**UNIVERSITY OF TORONTO**

**UNIVERSITY OF LEEDS**

**HEIDELBERG UNIVERSITY**

**TRINITY COLLEGE DUBLIN**

**PENNSYLVANIA STATE UNIVERSITY**

**LANCASTER UNIVERSITY**



**SCAN TO VIEW AND KNOW  
MORE ABOUT OUR FACULTY  
COMMUNITY**



**Deepak Parekh**  
*Chairman, HDFC*



**Uday Kotak**  
*Managing Director,  
Kotak Mahindra Bank*



**N. R. Narayana  
Murthy**  
*Founder, Infosys*



**E. Sreedharan**  
*Metro Man of India*



**Dilip Shanghvi**  
*Founder, Sun  
Pharmaceuticals*



**Dr. S. Jaishankar**  
*Hon'ble Minister  
of External Affairs,  
Government of India*



**Amitabh Bachchan**  
*Indian Film Actor*



**Mahendra Singh  
Dhoni**  
*Former Captain,  
Indian Cricket Team*



**K. V. Kamath**  
*Former  
Managing Director,  
ICICI Bank*



**R. Gopalakrishnan**  
*Executive Director,  
Tata Sons*



**Anil Agarwal**  
*Founder, Vedanta*



**N. Chandrasekaran**  
*Chairman, Tata Sons*



**Sajjan Jindal**  
*Chairman and  
Managing Director,  
JSW Group*



**Aditya Puri**  
*Former  
Managing Director,  
HDFC Bank*



**Prasoon Joshi**  
*Poet, Writer and  
Chairperson of  
Central Board of Film  
Certification*



**Anil Kumble**  
*Former Captain,  
Indian Cricket Team*



**M.P. Taparia**  
*Managing Director,  
Supreme Industries*



**Shubha Mudgal**  
*Indian Classical  
Singer*



**Sonal Dabral**  
*Group Chief,  
Creative Officer and  
Vice Chairman,  
Ogilvy & Mather  
India*



**Virender Sehwag**  
*Former Indian  
Cricketer*



**Geet Sethi**  
*Former World  
Billiards Champion*



**Ridham Desai**  
*Managing Director,  
Morgan Stanley*



**Dr. R A Mashelkar**  
*Scientist and Former  
Director General,  
Council for Scientific  
& Industrial Research  
(CSIR)*



**Shikha Sharma**  
*Former Managing  
Director, Axis Bank*



**Aamir Khan**  
*Actor, Director &  
Producer*



**Keki Mistry**  
*Vice Chairman &  
CEO, HDFC*



**Amay Hattangadi**  
*Managing Director,  
Morgan Stanley*



**Gagan Narang**  
*Indian Sport  
Shooter*



**Shekhar Gupta**  
*Editor-in-Chief &  
Chairman, ThePrint*



**Montek Singh  
Ahluwalia**  
*Former Deputy  
Chairman,  
Planning Commission  
of India*

# OUR COMMUNITY OF INDUSTRY EXPERTS

---

FLAME's industry connect provides students access to renowned industry experts and stalwarts throughout their academic journey.

We believe in the concept of 'leading by example' and strive to provide an environment where students are given opportunities to understand the real world and its nuances through the perspectives of domain experts and leaders.



SCAN TO KNOW MORE ABOUT  
OUR NOTABLE GUESTS



# OUR STUDENT COMMUNITY OF DOERS

When students join the FLAME community, they step into a global network of brilliant minds that go on to achieve great things.

Our students come from **25 States and 4 Union Territories in India** and from **10 countries across the globe**, building a truly rich and multicultural learning experience. We are proud to say that we have an extremely diverse student body. **65% of our students are female and 35% are male**. Over a third of our students are on scholarships or financial aid, ensuring that no student who deserves a FLAME education is denied the opportunity due to financial constraints.

An elected Student Council offers assistance to students in various aspects of campus life. They serve as leaders and act as intermediaries between the administration and students.



SCAN TO  
KNOW MORE









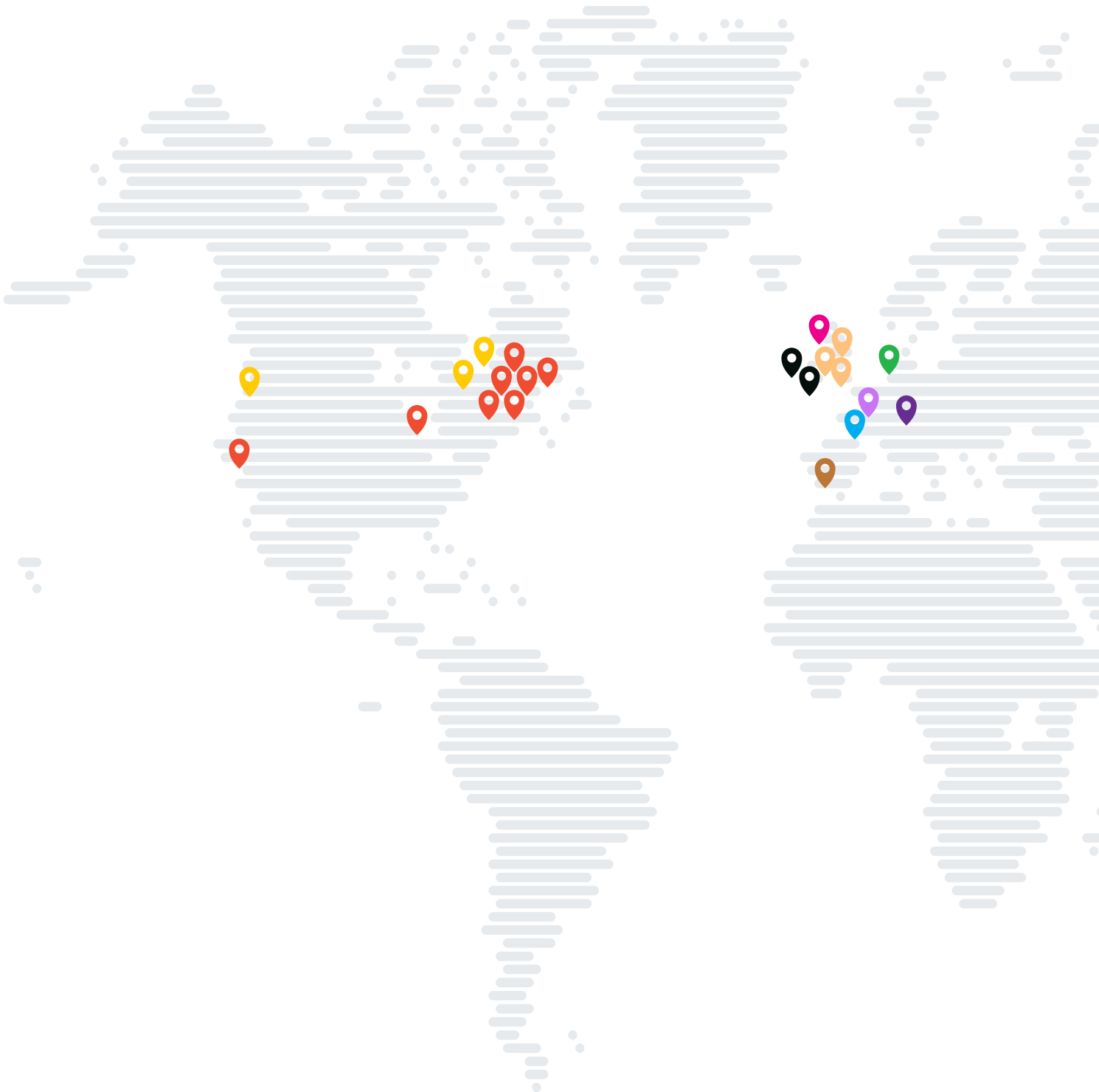
# EMBRACING

# A GLOBAL OUTLOOK

FLAME is committed to enhancing the educational experience for both its full-time students and visiting international students. Through its global collaborations, FLAME provides multiple Semester Abroad and Summer Abroad opportunities.

Although we are deeply rooted in the Indian context, students are encouraged to operate in multilingual and multicultural settings to enhance their employability and demonstrate an experience of living and learning in a culture that is different from their own.

**TO OPEN THIS GATEWAY FOR OUR STUDENTS, WE HAVE FORGED COLLABORATIONS WITH SOME OF THE MOST PRESTIGIOUS INSTITUTES ACROSS THE GLOBE.**





## United States of America

- Wellesley College
- Yale University (Summer Programs)
- Kelley School of Business, Indiana University - Bloomington
- University of California, Davis
- Worcester Polytechnic Institute
- Middlebury College
- Center for Geographic Analysis, Harvard University
- Global Liberal Arts Alliance
- CFA University Affiliation
- Boston University (MET International)



## Canada

- York University
- University of British Columbia
- Huron University College



## United Kingdom

- University of Sheffield
- University of St Andrews
- University of Exeter



## Ireland

- University of Galway
- University College Dublin



## Spain

- IE University



## New Zealand

- The University of Auckland



## France

- Sciences Po



## Belgium

- Ghent University



## Netherlands

- WageIndicator



## Germany

- Frankfurt School of Finance and Management



## Scotland

- Library of Mistakes

*\* For representative purpose only*

The background of the page is a photograph of a hall with several flags hanging from the ceiling. A large, semi-transparent yellow rectangle is overlaid on the left and center of the image, serving as a background for the text.

# GLOBAL ENGAGEMENT

FLAME's faculty community is at the center of our global impact mission, and we focus on providing opportunities for their growth. We encourage and support our faculty with funding to engage in international research and publications to drive real-world change. We also organize visits by foreign delegations of faculty and researchers, as well as panel discussions facilitating interactions. Some of the areas that we focus on include curriculum development, pedagogical innovation, collaborative teaching, and building relationships with the community in ways that go beyond the mere sharing of information.

We also promote talks, discussions, presentations and discourses – academic, social, and cultural – by eminent international scholars and educationists. This serves as a platform for faculty and students to gain insights on global trends and issues.









# REINVENTING

# LIBERAL EDUCATION

We strive to be at the leading edge of knowledge, offering programs that are innovative in pedagogy, curriculum, teaching and learning.

We see ourselves as an outstanding place of scholarship, heeding to the challenges of a rapidly changing world by continuously adapting and reinventing our offerings.

# OUR SCHOOLS

---

Learning is a multi-faceted process that involves the mind, body, and spirit. The schools at FLAME University emphasize this holistic approach to education. Our liberal education provides the tools to think clearly and effectively. We aim to expose and train students in the various modes of thinking that can be applied to the issues arising in human affairs. By doing so, intellectual growth is achieved through the application of these skills to examine, analyze and synthesize information from multiple sources.

We are dedicated to ensuring that students can think critically, communicate effectively, and have a problem-solving approach to take on the challenges of the real world.

**FLAME SCHOOL OF  
LIBERAL EDUCATION**

---

**FLAME SCHOOL OF  
BUSINESS**

---

**FLAME SCHOOL OF  
COMMUNICATION**

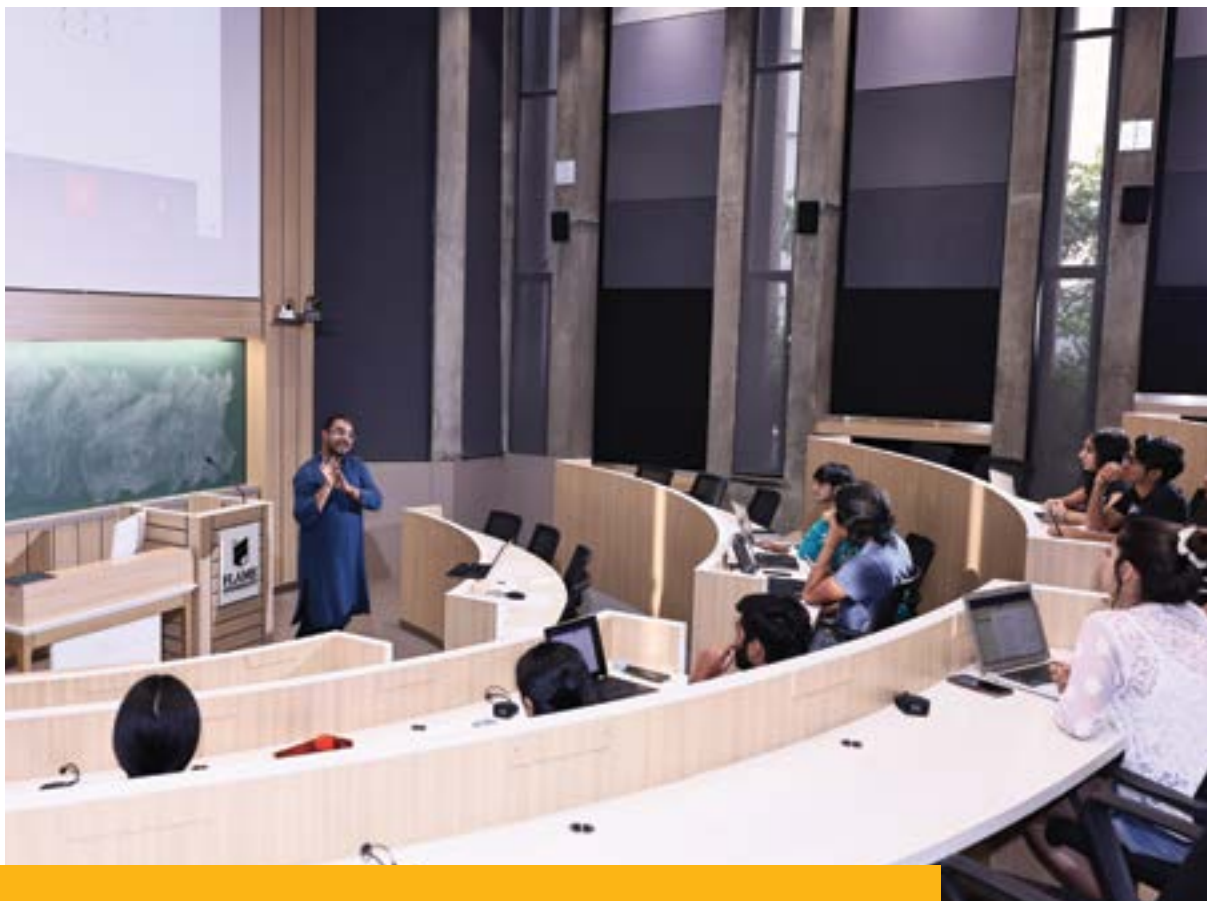
---

**FLAME SCHOOL OF  
COMPUTING AND DATA  
SCIENCES**

---

**FLAME SCHOOL  
OF DESIGN, ART &  
PERFORMANCE**





## FLAME SCHOOL OF LIBERAL EDUCATION

The FLAME School of Liberal Education offers intensive programs in humanities, social sciences, economics, psychology, and physical and natural sciences.

It offers courses in disciplines like literature, history, philosophy, political science, public policy, religion, sociology, environmental studies, anthropology and other interdisciplinary areas.

The school consists of the following departments:

**DEPARTMENT OF PHYSICAL & NATURAL SCIENCES**

**DEPARTMENT OF HUMANITIES & LANGUAGES**

**DEPARTMENT OF SOCIAL SCIENCES**

**DEPARTMENT OF ECONOMICS**

**DEPARTMENT OF PSYCHOLOGICAL SCIENCES**



## **FLAME SCHOOL OF BUSINESS**

The FLAME School of Business is dedicated to the development of management professionals who are competent in their chosen domain, sensitive to the environment and culture, accountable to their communities, ethical in all they do, and global in their outlook and approach.

It provides programs that are tailored to today's ever-changing globalized business environment. The programs offered by the school cover all the areas of management sciences such as marketing, finance, accounting, organizational behavior, business policy and strategy, operations management, leadership, entrepreneurship, and business analytics.

The school consists of the following departments:

**DEPARTMENT OF FINANCE**

**DEPARTMENT OF MARKETING**

**DEPARTMENT OF HUMAN RESOURCE MANAGEMENT**

**DEPARTMENT OF OPERATIONS & ANALYTICS**



## FLAME SCHOOL OF COMMUNICATION

The FLAME School of Communication encourages, nurtures, and develops independent-thinking, creative, effective, and responsible communicators and managers across multiple media.

This is done in an environment that allows students to explore new ideas in content and form and to experiment and re-examine ideas on an ongoing basis. In addition, the school addresses a long-felt need for high-quality education in the art and business of communication and media.

The school consists of the following department:

**DEPARTMENT OF MEDIA AND JOURNALISM**





## FLAME SCHOOL OF COMPUTING AND DATA SCIENCES

Given the relevance of computational sciences in shaping the world today, the FLAME School of Computing and Data Sciences has been established with a vision to be one of the leading centers of education and research in computing technologies.

Through its academic offerings, the school seeks to educate the next generation of industry and thought leaders who will play a transformational role in the affairs of the world. It also aims to enable an environment for faculty to pursue interdisciplinary and cutting-edge research in this field.

The school consists of the following department:

**DEPARTMENT OF COMPUTING AND DATA SCIENCES**



## FLAME SCHOOL OF DESIGN, ART AND PERFORMANCE

The FLAME School of Design, Art and Performance has very specific goals, all of which are geared toward FLAME becoming a university of excellence in the teaching and promotion of design and arts through an interdisciplinary approach.

The school aims to encourage innovation and opportunities that challenge the existing norms of teaching design and arts in India. It provides education in design and fine and performing arts through a unique pedagogy and interaction with the arts of other countries.

The school consists of the following department:

**THE DEPARTMENT OF DESIGN, ART & PERFORMANCE**







# OUR ACADEMIC PROGRAMS

FLAME University's academic programs are designed to provide students with the necessary knowledge and skills to enable them to play a significant role in the field of their choice. These innovative programs are designed to combine the preservation of knowledge with a spirit of innovation and adventure. They instill curiosity, broaden horizons, and inculcate leadership skills in an intensive academic environment by bringing together faculty from leading academic institutions and pioneers of their professions.

## UNDERGRADUATE

### (4-YEAR) \*

[B.A., B.Sc., BBA, BBA  
(Communications Management)]

\*4-year program leads to an honors degree. 4-year program comes with an exit option after three years.

## UNDERGRADUATE DESIGN

### (4-YEAR)

[B.Des]

## POSTGRADUATE

[MBA, MBA (Communications Management),  
PGPEI, M.Sc. (Economics)]

## DOCTORAL

[PhD in Management, Economics,  
Psychology, Data Science, Environmental  
Studies, Humanities, Sociology]

## **WE OFFER OVER 350 MAJOR-MINOR COMBINATIONS ACROSS THE FOLLOWING SPECIALISATIONS:**

- Economics
- Psychology
- Literary & Cultural Studies
- Environmental Studies
- Computer Science
- Computer Science & Design
- International Studies
- Public Policy
- Journalism
- Sociology
- Applied Mathematics
- Finance
- Business Analytics
- Marketing
- Human Resource Management
- Entrepreneurship
- Operations
- General Management
- Dance
- Music
- Theatre & Performance Studies
- Design
- Advertising & Branding
- Digital Marketing & Communications
- Film & Television Management
- Communication Studies
- Data Science & Economics
- Design Management
- Philosophy
- Experience Design





## FLAME SUMMER SCHOOL (FSS)

For university students

The FLAME Summer School (FSS) provides university students an opportunity to experience the liberal ethos of FLAME University, which values and incorporates an interdisciplinary pedagogy. Courses are offered across disciplines in areas like Creative Writing, Economics, Entrepreneurship, Psychology, Computer Science, Geographic Information Systems, International Relations, Art History, South Asian History, Theatre, and Media Studies. The courses are taught by FLAME faculty and international faculty from institutions that FLAME has collaborated with. Since the Summer School courses are open to students worldwide, one can expect a diverse and global classroom experience.

FSS is conducted in person at the FLAME campus. It employs a pedagogical approach based on blended learning. All the courses include instructor-led live sessions, activities, and discussions in class. Each course has a mix of tutorials, interactive modules, and self-paced learning materials.



SCAN TO KNOW MORE



## **FLAME UNIVERSITY SUMMER IMMERSION PROGRAM (FUSIP)**

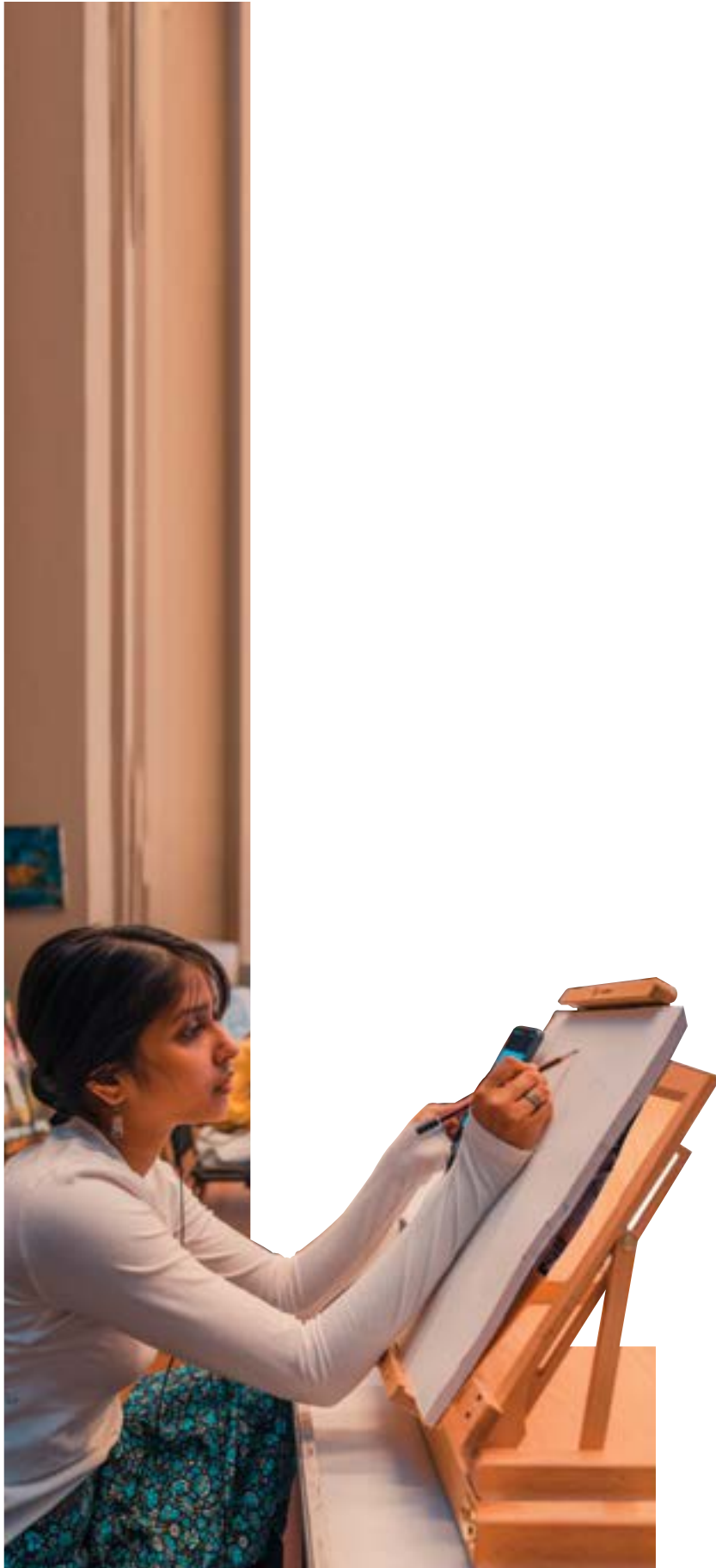
For high school students

The FLAME University Summer Immersion Program (FUSIP) offers high school students an opportunity to gain a holistic understanding of liberal education. The curriculum is interdisciplinary and delivered in a framework that embraces the spirit of liberal education at FLAME University - a spirit that places special emphasis on critical thinking, research, and engagement with diverse ideas and perspectives while inculcating the values of leadership, teamwork, and effective communication.

The program helps students strengthen their skills through a mix of exciting academic and non-academic courses that provide a strong foundation for success in college and beyond. The courses are designed to be contemporary and relevant, with content and delivery that go beyond what is covered in a traditional high school classroom. The program helps improve social awareness, imparts life skills, and instills a sense of empathy. The students will be exposed to multiple areas, including psychology, technology, writing, environmental conservation, and the arts, among others.



**SCAN TO KNOW MORE**



# LEARNING BY DOING

FLAME's interdisciplinary education philosophy focuses on facilitating growth through the culmination of experiential learning programs in a real-world context.

With an integrated curriculum, we aim to instil in students the capacity to think critically and creatively. We emphasize practical learning and the application of theoretical concepts learned by our students.





## **SOCIAL IMMERSION**

### **DEVELOPMENTAL ACTIVITIES PROGRAM**

The Developmental Activities Program (DAP) is designed to get students to recognize the socio-economic realities of India at the grassroots level and understand how organizations have developed to address these problems. Students are required to volunteer for one month during their summer break at a non-profit organization dedicated to social change; these can be a nonprofit organization, a semi-government agency, a government agency, a Corporate Social Responsibility project, or a non-profit foundation.

## **PROFESSIONAL IMMERSION**

### **SUMMER INTERNSHIP PROGRAM**

The Summer Internship Program (SIP) aims to provide a platform for students to integrate classroom knowledge with related practical applications and skills in a professional ecosystem. It gives students a chance to become an integral part of real-time situations that not only provide practical learning but also provide ringside perspectives on future career paths that students would like to explore. While the learning in the classroom at FLAME University affords students a unique and invaluable opportunity to enhance their academic maturity in a multi-dimensional manner, the SIP is a bridge between academics and practical applications and helps lay a strong career-oriented foundation for their learning and all-round development.





## CONNECT THE DOTS

### INTERDISCIPLINARY MAJOR PROJECT

The Interdisciplinary Major Project (IMP) is a group-based research project in which a team of students from diverse specializations works together under the guidance of a faculty member to address an issue or solve a problem that is relevant to society, technology, business, or any other aspect of life. This provides an opportunity for students to employ important skills such as critical thinking, communication, problem-solving, research, teamwork, etc. along with specialized knowledge and contextual understanding learned over their education at FLAME, apply it in practical contexts, and provide actionable solutions to pressing issues.

## HISTORICAL AND CULTURAL IMMERSION

### DISCOVER INDIA PROGRAM

The Discover India Program (DIP) is an integral part of the experiential learning component of the undergraduate curriculum at FLAME. The program's primary focus is exploring, understanding, and experiencing the rich culture and heritage of India. Some of the aspects of the study include fine and performing arts practices and traditions, historical monuments and architecture, social customs, religious traditions and practices, festivals, rites, and traditional livelihood practices. The program is designed to be exploratory and allows students to develop a critical approach to the study of cultural and historical traditions as well as learn basic methods of project formulation along with written and visual documentation.

# DISCOVER INDIA PROGRAM

## A CATALYST FOR THE UNDISCOVERED INDIA

### SOME OF THE DIP PROJECTS UNDERTAKEN BY STUDENTS



#### *Attar from Uttar: The Fragrances of Kannauj*



Throughout history and until date, 'attar' is processed and produced in Kannauj, a small city in the state of Uttar Pradesh. This is the only place in the world where 'attar' is extracted using the traditional 'deg-bhapka' method of the Mughal period. However, with the passage of time, Indian society gravitated towards modernity and economic prosperity, leaving behind 'attar' as an industrial product.

#### *Narmade Har*

Water has been a vital element around which some of the greatest, most historically rich civilizations have flourished. The river Narmada is a mini-cosmos in itself. She has immortalised herself in the form of a mother deity who has engendered mythology, rituals, dance, songs, history and spirituality. On the other hand, one cannot dismiss the influence of the river in the lives of the Parikramawasis, who live with humility and simplicity, sacrificing the pleasures of the material world for long stretches of time.







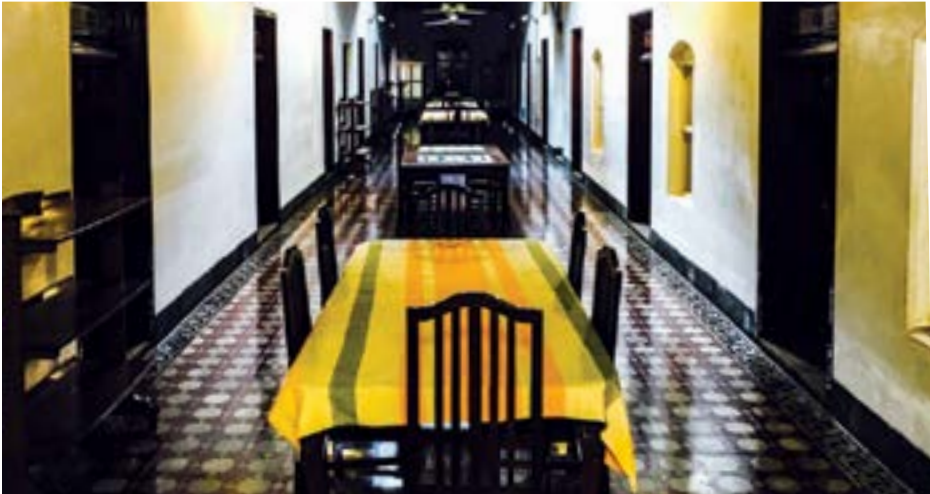
### ***Bodh Gaya and Gaya: The Divine Appeal***



Bodh Gaya and Gaya are two temple towns in the Gaya district of Bihar, India. While Bodh Gaya is an important pilgrim-site for Buddhists across the world, Gaya, draws in a huge number of Hindu pilgrims from across the country. These two temples are exemplars of co-existence which opens a window of tolerance and faith to the entire world.



### ***Floored by Legacy: Athangudi Tiles***



The emergence and evolution of the Athangudi tiles have earned Sivaganga in Tamil Nadu a significant place in contemporary times. These tiles have become just another aspect of the many facets of Chettinad architecture. The tiles are made from soil that is only found within a 3-kilometer radius of the village of Athangudi, adding to their exclusivity.



SCAN TO VIEW MORE  
DIP PROJECTS



# ADVANCING KNOWLEDGE

India and the world face some of the biggest political, socio-economic, environmental, and technological challenges.

These challenges require the expertise to think critically and have an in-depth understanding of how these forces will impact us in the future. FLAME is committed to the pursuit of research excellence. Rooted in the Indian context, our ecosystem is sensitive to the needs of the country in particular and of developing societies in general through its focus on applied research and innovation that create maximum social impact. Our cutting-edge research has a real-world impact on everything from climate change to plastic pollution, evolving industries to social inequality.





# OUR CENTRES OF EXCELLENCE

---

We serve as a platform that brings together renowned policymakers, bureaucrats, industry professionals, and academicians to enable path-breaking research.

FLAME University currently hosts more than ten research centres that work at the interface of disciplines to advance high-quality research in thrust areas. These areas include but are not limited to climate change, plastic pollution, social inequality, computational sciences, and new evolving industries. The centres at the university facilitate and pursue cutting-edge research by continuously promoting and enhancing the university's research capacity through various academic initiatives. Amongst others, these include developing networks with researchers and research centres; building linkages with industry; providing interdisciplinary training for undergraduate and postgraduate students; and reaching out to the leading researchers internationally to augment the university's contribution to the community.



**SCAN TO READ MORE ABOUT THE  
RESEARCH CENTRES AT FLAME**





# FLAME CENTRE FOR KNOWLEDGE ALTERNATIVES

The centre is a new attempt to understand India through its experiences rather than theories. It collects, synthesizes, and chronicles local data and cultures. It aims to build accessible, participatory, and decentralized knowledge about India's towns, lives, and governance.

## Highlights

### THE GAZETTEER PROJECT

The project aims to construct local-level chronicles of India. The centre is working on mapping, documenting, and creating a hub of local data and cultures pertaining to the districts and talukas.

### COLLABORATION WITH THE LAXMI MITTAL AND FAMILY SOUTH ASIA INSTITUTE, HARVARD UNIVERSITY

This collaboration is focused on researching pedagogical interventions that use art and performance to enhance reading interests and outcomes among students.

# FLAME CENTRE FOR RESEARCH IN WELL-BEING AND HAPPINESS



The Centre for Research in Wellbeing and Happiness is a pioneering research initiative established at FLAME University, Pune, dedicated to addressing wellbeing challenges (individual and societal) through the integration of objective as well as subjective dimensions, within the Indian context.

The centre aims to explore and advance the understanding of subjective wellbeing by exploring beyond objective indices (social and economic), thereby focusing on qualitative aspects through a social science lens. CRWBH seeks to incorporate diverse measures of wellbeing into academic, research and policy discussions to promote the holistic development of society and a happier humanity.

# FLAME CENTRE FOR MATHEMATICAL MODELLING

The aim of the centre is to promote teaching and research in applied mathematical sciences, including the social sciences, with particular emphasis on practicality combined with academic interest.

The focus is on cross-fertilisation and adaptation of ideas and techniques culled from various disciplines such as Mathematics, Statistics, Theoretical Physics and Computational Sciences for the solution of problems in various fields of academic endeavor and industrial relevance. The scope of its research interests is diverse and will confront challenges in various areas of Theoretical Physics, Applied Mathematics, Modelling and Simulation of real world problems arising in the industry and academics, Computational Biology, Geophysics, Mathematical/Quantitative Finance, Economics and in other social sciences in which the importance of mathematical modelling is increasingly being recognized and appreciated.





# FLAME CENTRE FOR LEGISLATIVE EDUCATION AND RESEARCH

The centre explores and clarifies the public sphere of governance in India with support from PRS Legislative Research.

The centre acts as a key platform to catalyze academic research on issues that affect the quality of legislation. It creates engagement among the academic community, both students and faculty, on various issues related to the working of Indian democracy, with a focus on Parliament and state legislatures.



# FLAME CENTRE FOR SUSTAINABILITY, ENVIRONMENT AND CLIMATE CHANGE

The centre aims to understand the environment and important environmental issues by emphasizing both scientific concepts and applications together with the socio-political aspects of these issues.

By using contemporary methods from natural sciences to physical, social, and humanities, it addresses these issues and deals with the current state of the environment at various levels, right from management of water resources to pollution to climate change. The activities of the centre also incorporate field experience, hands-on project management, and collaborative research undertakings in India and abroad.



# FLAME CENTRE FOR ECONOMICS AND PUBLIC POLICY

The centre's mission is to make an impact in the academic-practicum domains of economics and public policy by providing cutting-edge interdisciplinary education, research, and civil society engagement in shaping and understanding public opinion.

The centre engages in research and publication, teaching and research, and training and consultation with a clear focus on improving strategies and procedures of decision-making and policy formulation in both the public and private sectors.



# FLAME CENTRE FOR ENTREPRENEURSHIP AND INNOVATION

The centre promotes the practice of entrepreneurship by providing student ideas and startups access to mentoring programs, networking events, speaker series, and competitions.

It aims to bring together entrepreneurs, students, professionals, business leaders, and investors to form a community that fosters a culture of entrepreneurship.

## Highlights

### FLAME INCUBATOR PROGRAM

The initiative aims to educate and support aspiring young entrepreneurs to work on their business ideas, convert the ideas into products, and build sustainable businesses.

### FLAME ORIGINS PROGRAM

The program selects early-stage start-ups and offers deep mentoring to set them on a growth path with a refined pitch for investors.



# FLAME CENTRE FOR CASE DEVELOPMENT



The centre provides a medium for FLAME's academic scholars to write their cases and work on their craft.

The case method of teaching has gained popularity in several disciplines. The centre intends to become a repository of cases across multiple disciplines by providing the necessary infrastructure and encouragement to FLAME's faculty members for case writing.



# THE INDIA CENTRE

The centre is envisioned as a hub for an outstanding interdisciplinary study of India and the development of academic resources through various activities, including research, teaching, conferences, and archive building.

It is a meeting ground for diverse scholarly perspectives on India from within and outside it. It strives to integrate classical texts with contemporary religious studies, politics, economics, environmental studies, gender studies, psychology, health sciences, and more.

## Highlights

**WIDE-RANGING MEMORANDUM OF UNDERSTANDING (MOU) WITH THE AMERICAN INSTITUTE OF INDIA STUDIES**



# CENTRE FOR DIGITAL LEARNING

The centre's mission is to incorporate blended learning within our DNA using innovative pedagogy and technology. It aims to amplify our leadership position in liberal and management education for societal upgradation in the digital era.



# CENTRE FOR INTER-DISCIPLINARY ARTIFICIAL INTELLIGENCE (CAI)

The centre focuses on developing Artificial Intelligence (AI) applications tailored to India's needs and the Indian context.

The centre also aims to harness the transformative power of AI in creating robust local and regional models for sustainability and disaster mitigation.



A photograph of two construction workers on a steel beam. The worker in the foreground is wearing a yellow hard hat, a light blue and grey long-sleeved shirt, orange pants, and brown boots. He is leaning forward, holding a large wooden mallet. The worker in the background is also wearing a yellow hard hat, a grey long-sleeved shirt, blue jeans, and brown boots. He is holding a large orange and black container. The background shows a hazy, overcast sky and some greenery in the distance.

# WAGEINDICATOR RESEARCH LAB

The lab collects, analyzes, and shares information on Actual Wages, Minimum Wages, Living Wages, Labour Laws, Gig and Platform Work, Collective Agreements, and much more.

The mission is to ensure more labour market transparency for workers, employers, and policymakers worldwide, advocating that all workers earn a fair wage under good conditions.



# FLAME INVESTMENT LAB

The lab is an initiative that strives to deliver the concepts and decipher the art of value investing to interested students.

It provides tools for self-learning and acquiring knowledge, constantly striving for intellectual stimulation and asking questions.

## Highlights

### FLAME INVESTMENT LAB WITH THE MASTERS

The FLAME Investment Lab with the Masters is an annual residential program. It is structured keeping in mind FLAME's conviction that value investing is the only proven successful investment process that has delivered above-market returns through various market cycles. It provides investors with various tools needed to form a temperamentally sound investment discipline. Additionally, it allows participants to interact with and learn from investment masters and understand their investment process.



# CENTRE FOR DIGITAL ADVANCEMENT

The centre focuses on leveraging digital technologies to drive positive societal and economic change. By bringing together experts from various fields, the CDA aims to create solutions that increase access and opportunities for all.

The CDA's research spans critical areas such as digital inclusion, cybersecurity, emerging technologies, and digital governance, with a focus on understanding the usage patterns and challenges faced by diverse segments of society.

## Highlights

### INDIA DIGITAL LITERARY INDEX

An ongoing national survey to assess digital literacy, laying the foundation for evidence-based policies and interventions.



# FACULTY RESEARCH

The faculty at FLAME are thought leaders pushing the boundaries of their disciplines and bringing those insights to the students. They are not just researchers, but practitioners who can bring real-world experience into the classroom. To encourage this further, we provide a platform beyond the campus to help our faculty share their opinions, thoughts, research, and knowledge.





# FLAME FACULTY ON PRESTIGIOUS EDITORIAL BOARDS



**Prof. Tannistha Samanta**

*Faculty of Sociology*

*PhD - University of Maryland,  
USA*

**EDITORIAL BOARD MEMBER OF THE  
JOURNAL OF AGING STUDIES**



**Prof. Arnab Chakrabarti**

*Faculty of Economics*

*PhD - Indian Statistical  
Institute, Kolkata*

**EDITORIAL BOARD MEMBER OF  
HUMANITIES AND SOCIAL SCIENCES  
COMMUNICATIONS**



**Prof. Preetha Menon**

*Faculty of Advertising and  
Branding*

*PhD - Indian Institute of  
Technology-Madras*

**EDITORIAL BOARD MEMBER OF  
INTERNATIONAL JOURNAL OF CONSUMER  
STUDIES**

# RESEARCH PUBLISHED IN TOP-TIER JOURNALS



**Prof. Prasad Pathak**  
*Faculty of Environmental  
Studies*

*PhD - University of North  
Carolina at Greensboro, USA*

## Journal of Urban Affairs

**INDIA'S "SMART" CITIES MISSION: A  
PRELIMINARY EXAMINATION INTO INDIA'S  
NEWEST URBAN DEVELOPMENT POLICY**



**Prof. Andrea Phillott**  
*Faculty of Environmental  
Studies*

*PhD - Central Queensland  
University, Australia*

## Endangered Species Research

**ASSESSING THE EVIDENCE OF 'INFERTILE'  
SEA TURTLE EGGS**



**Prof. Sunil Rajpal**  
*Faculty of Economics*

*PhD - Central University  
of Gujarat*



**Prof. Devendra Jain**  
*Faculty of Finance*

*PhD - The University of the  
South Pacific, Suva, Fiji*

## The Lancet Global Health

**PROGRESS IN REACHING UNVACCINATED  
(ZERO-DOSE) CHILDREN IN INDIA, 1992-  
2016: A MULTILEVEL, GEOSPATIAL ANALYSIS  
OF REPEATED CROSS- SECTIONAL SURVEYS**

## Asia and the Pacific Policy Studies

**WHY DOES CURRENCY DENOMINATION IN  
EXTERNAL LIABILITIES OF SMALL ISLAND  
DEVELOPING STATES MATTER? EVIDENCE  
FROM FIJI**



**Prof. Aparna Shankar**  
*Faculty of Psychological Sciences*

*PhD - University of Leeds, UK*

**International Journal of Environmental Research and Public Health**  
**LONELINESS IN OLDER INDIAN DYADS**



**Prof. Yugank Goyal**  
*Faculty of Public Policy*

*PhD - Erasmus University Rotterdam - Netherlands*

**Land Use Policy**  
**INFORMAL LAND LEASING IN RURAL INDIA PERSISTS BECAUSE IT IS CREDIBLE**



**Prof. Neha Yadav**  
*Faculty of Marketing*

*PhD - National Institute of Industrial Engineering (NITIE)*

**Journal of Retailing and Consumer Services**  
**THE DIFFUSION OF MOBILE PAYMENTS: PROFILING THE ADOPTERS AND NON-ADOPTERS**



**Prof. Bilwa Deshpande**  
*Faculty of Marketing*

*PhD - XLRI, Jamshedpur*

**European Journal of Marketing**  
**THE DARK SIDE OF ADVERTISING: PROMOTING UNHEALTHY FOOD CONSUMPTION**



**Prof. Yashobanta Parida**  
*Faculty of Economics*

*PhD - Centre for International Trade & Development, JNU, New Delhi*



**Prof. Joyita Chowdhury**  
*Faculty of Economics*

*PhD - University of Utah, USA*

**Scientific Reports**  
**ROLE OF INCOME AND GOVERNMENT RESPONSIVENESS IN REDUCING THE DEATH TOLL FROM FLOODS IN INDIAN STATES**

# BOOKS PUBLISHED



**Prof. Dishan Kamdar**

*Vice-Chancellor*

*PhD - NUS, Singapore*

**Publisher - Wiley**

**CLEANSING MOMENTS:  
DEVELOPING LEADERSHIP SKILLS FOR ALL  
TIMES**



**Prof. Saloni Kapur**

*Faculty of Social Sciences*

*PhD - Lancaster University, UK*

**Publisher - Cambridge Scholars  
Publishing**

**PAKISTAN AFTER TRUMP: GREAT POWER  
RESPONSIBILITY IN A MULTI-POLAR WORLD**



**Prof. Kedar Kulkarni**

*Faculty of Humanities and  
Languages*

*PhD - University of  
California, San Diego, USA*

**Publisher - Bloomsbury**

**WORLD LITERATURE AND THE QUESTION OF  
GENRE IN COLONIAL INDIA - POETRY, DRAMA,  
AND PRINT CULTURE 1790-1890**



**Prof. Ragini Mohite**

*Faculty of Humanities and  
Languages*

*PhD - University of Leeds, UK*

**Publisher - Clemson University Press**

**MODERN WRITERS, TRANSNATIONAL  
LITERATURES | RABINDRANATH TAGORE &  
W.B. YEATS**





**Prof. Ashutosh Potdar**

*Faculty of Theatre*

*PhD - Shivaji University,  
Kolhapur, India*

**Publisher - Routledge India**

**PERFORMANCE MAKING AND THE ARCHIVE**



**Prof. Yugank Goyal**

*Faculty of Public Policy*

*PhD - Erasmus University  
Rotterdam - Netherlands*

**Publisher - Westland**

**WHO MOVED MY VOTE?**



**Prof. Maya Dodd**

*Faculty of Humanities and  
Languages*

*PhD - Stanford University,  
USA*

**Publisher - Routledge India**

**EXPLORING DIGITAL HUMANITIES IN INDIA**



**Prof. Nidhi Kalra**

*Faculty of Humanities and  
Languages*

*Pursuing PhD - IIT-Bombay*

# GRANTS RECEIVED

---

## Prof. Chiranjoy Chattopadhyay

*Faculty of Computer Science*

Received a grant from the i-Hub Drishti Foundation, IIT Jodhpur, for his project titled Design anti Development of a Software Platform to Create Immersive Content from Digitized anti Born Digitize/ Documents.

---

## Prof. Maya Dodd

*Faculty of Humanities & Languages*

Received a grant from the European Commission for her project titled Omitted from history: How workers on India's building sites mediated twentieth-century modernity, OMHI.

---

## Prof. Rajitha Venugopal

*Faculty of Humanities and Languages*

Received a grant from the Association for the Study of Literature and Environment for her proposal of translating the biography titled 'Pachaviral: Dayabaiyude Aatmakatha' from Malayalam to English.

---

## Prof. Yugank Goyal

*Faculty of Public Policy*

Received a grant from the Indian Knowledge Systems Division, Ministry of Education, Government of India for his research project titled Gyan Gunjan.

---

## Prof. Mayurakshi Chaudhuri

*Faculty of Sociology*

Received an Indo-Swiss grant for the project, 'Digital Twins: Negotiating identity and translocated heritage in the global age'.

---

## Prof. Sunil Rajpal

*Faculty of Economics*

Worked as a Research Professor at the Department of Public Health Sciences, Graduate School of Korea University, in Seoul. The position was funded by the Korean government through its prestigious BK21 (Brain to Korea) fellowship, offered every four years to international scholars in their domains.

---

## Prof. Yamini Krishna

*Faculty of Communication*

Received the Sher-Gil Sundaram Arts Foundation and Asia Art Archive in India Research Grant for her project, 'Sabras - A Glimpse into the Deccani Renaissance'.

# OTHER HIGHLIGHTS

---

## Prof. Tannistha Samanta

*Faculty of Sociology*

Invited to be the Associate Editor of the Journal of Aging Studies. A top journal in the field of aging and social gerontology offering theoretically engaged interpretations that challenge existing theory and empirical work.

---

## Prof. Mayurakshi Chaudhuri

*Faculty of Sociology*

Invited to offer a course titled, 'Images, Imaginations, and Cultures', as part of the Government of India's Swayam Prabha Project.

---

## Prof. Pankaj Jain

*Faculty of Humanities and Languages*

Invited to be on the advisory board of Yale University's forum on religion and ecology.

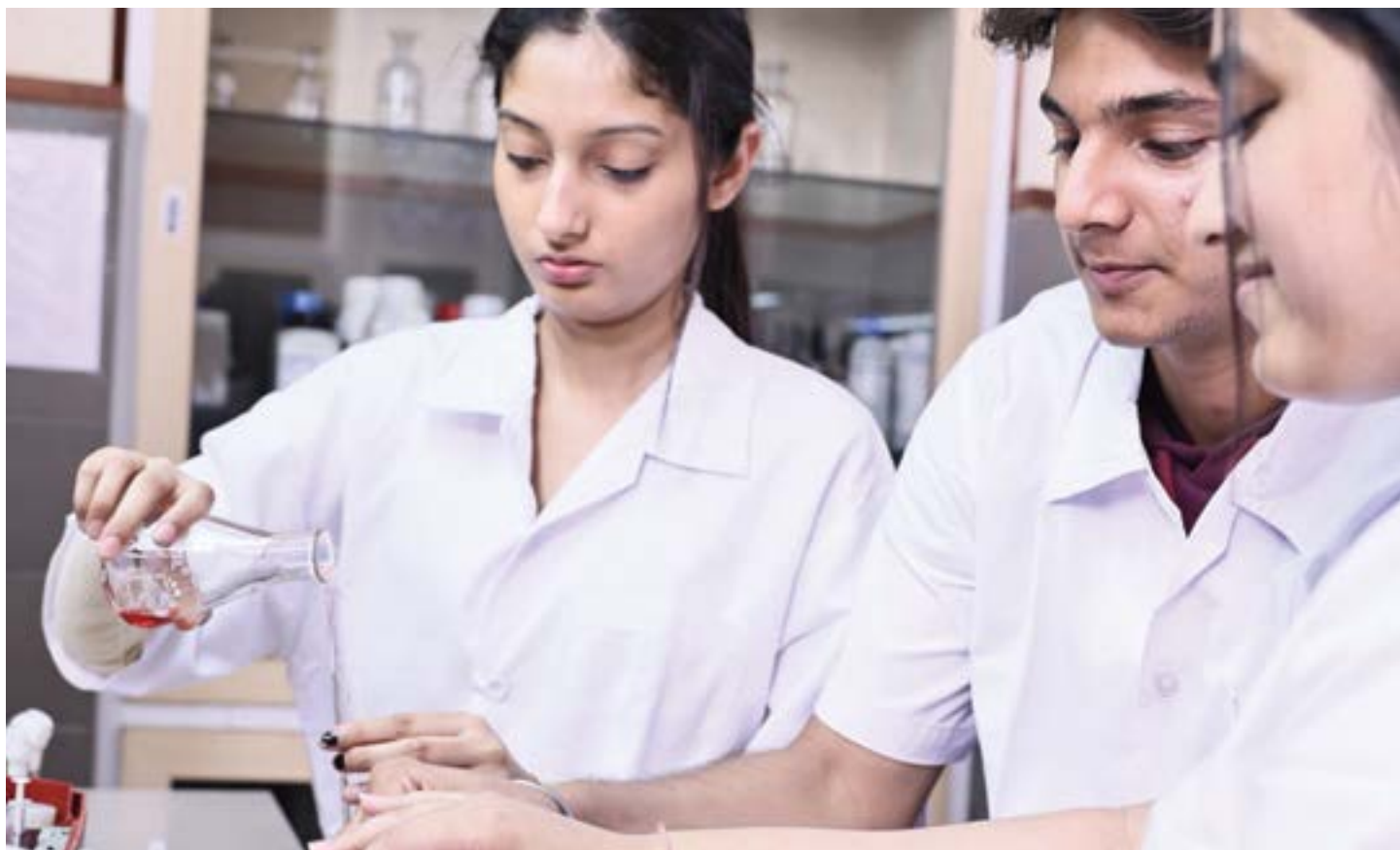


# STUDENT RESEARCH

Addressing real-world challenges while learning at a university is highly rewarding for a student. To bring out the inner researcher and scholar in a student, we ensure that they are encouraged to conduct their desired research at all levels. FLAME helps students build capacity and address knowledge and skill gaps for effective research. When a student investigates truths, they invent realities. Students conduct their research under the supervision of faculty or collaborate with faculty on several research projects. This not only transforms a student's academic abilities but also enhances their critical thinking capacities and team-building skills.



SCAN TO VIEW SOME OF THE  
STUDENT RESEARCH WORK







## INTERNATIONAL CONFERENCES

Scholars and researchers are provided with opportunities to engage in scholarly exchanges on research and subject-based pedagogy at conferences. They get to build networks, start new projects, find new collaborations, and increase their awareness of new trends in their respective areas of interest.

Here are some of the conferences that FLAME has organized:

- **LAW, ECONOMICS AND POLICY CONFERENCE WITH THE INSTITUTE OF NEW ECONOMIC THINKING**
- **PURPOSE SUMMIT CONFERENCE**
- **CULTURE AND IDENTITY: CHALLENGES AND PROSPECTS**
- **TRICENTRE CLIMATE CHANGE CONFERENCE**
- **CONFERENCE ON GROWTH, DEVELOPMENT AND SUSTAINABILITY**
- **BEHAVIORAL LAW AND JUSTICE: ASPECTS OF NEGOTIATIONS AND DECISION-MAKING CONFERENCE**
- **INTERNATIONAL ACCOUNTING, FINANCE, ECONOMICS, AND BANKING CONFERENCE**
- **CONFERENCE ON CASES AND PEDAGOGICAL INNOVATIONS**



SCAN TO  
KNOW MORE



# SOCIETAL

# IMPACT

FLAME is conceptualized with a desire to give something back to society in a philanthropic manner.

The founding of FLAME is anchored on the thought that the promotion of education is the highest form of creating impact in society due to its ‘multiplier effect’- the impact is not only on the person educated but also on their family and friends.

In everything that we pursue, we strive to make a difference at the local, state, national, and international levels. Our goal is to nurture sensitive, informed, ethical, and responsible individuals who use their knowledge to bring about positive and sustainable change in their society and the world at large.

# WELFARE EVENTS

As part of its community outreach, FLAME University, through its various departments and clubs, volunteers its services and expertise to the broader community, particularly the Lavale village. FLAME believes that a university is not just an extension of one's education, but rather a path people walk on towards who they would like to become. Therefore, we offer multiple pathways to civic engagement and community change to encourage the development of lifelong habits of civic learning. Various welfare clubs and initiatives at FLAME use different mediums to expose students to community service and encourage them to look beyond their personal lives and reach out to help develop the larger community around them.

The university regularly and continuously undertakes various activities to generate funds for causes. Some of these include crowdfunding for education of unprivileged children, feminine hygiene campaigns, and collaborating with NGOs on issues of community interest.

These activities represent a partnership that the university has with the local community towards their educational and social development.

Some of the other activities undertaken include:

- **FLAME BAL BHAVAN**
- **LAVALE ADOPTION**
- **BLOOD DONATION CAMP**







# SCHOLARSHIPS & FINANCIAL AID

Nothing should stop a student from dreaming and living their dream.

FLAME propagates excellence and commits to attracting the brightest students to its programs. FLAME offers merit scholarships, special scholarships, and need-based financial support, recognizing the inherent excellence and distinctive attributes of students, thus ensuring that all deserving students can pursue their education at FLAME. **Currently, 1/3<sup>rd</sup> of the student body at FLAME is on some form of scholarship or financial aid. 1/5<sup>th</sup> of the program fees goes towards providing scholarships to deserving students.**





## MERIT SCHOLARSHIP

Awarded to the best-performing candidates at the time of admission. Fee waivers range from partial to complete.

## SPECIAL SCHOLARSHIP THROUGH APPLICATION

Awarded to achievers or exceptional all-around performers in a variety of fields. These scholarships are typically given to national or state rank holders, national or international athletes, or scholars.

## EMERGENCY NEED-BASED SUPPORT

Offered to students who face financial constraints caused by circumstances beyond their control. This may include loss of funding due to death, serious illness, or any other case that makes it difficult for a student to generate funds on their own.





# THRIVING CAMPUS LIFE

FLAME is not just a place, it is an experience.

With an emphasis on holistic development, we encourage extracurricular activities that build camaraderie and ensure personal growth. Our goal is to create an open, collaborative and innovative environment where one can explore their passions, hone the right skills, and thrive as individuals and as a community.

# LIFE ON CAMPUS

Vibrant student life is an integral part of the experience at the FLAME campus.

From being a student leader on the FLAME Student Council to participating in student clubs or festivals, there is never a dull moment on campus.





## STUDENT HOUSES

Four student houses, Aryabhata, Chanakya, Kalidas, and Vivekananda, compete against each other in several intra-college competitions promoting teamwork, leadership, and camaraderie among students.

## STUDENT FESTIVALS

An annual cultural fest, 'FLAME Fest' is held, which includes competitions like gaming, poetry writing, creative writing, public speaking, advertising, art marathons, singing, photography, dance, and drama, among others.

There is also an annual inter-college fest, Kurukshetra, which witnesses students from various colleges across India compete in sports, cultural, and management events. True to FLAME's foundation in liberal education, the fest is an all-around experience and caters to every individual's interest and skill set.

# STUDENT CLUBS

There are numerous clubs on campus for students to engage in diverse interests and activities that enrich their social, cultural, sporting, and educational experiences.

Due to the emphasis on sports, there are 21 sports clubs on campus. These include:

**CRICKET CLUB**  
**BASKETBALL CLUB**  
**BADMINTON CLUB**  
**BILLIARDS CLUB**  
**MARTIAL ARTS CLUB**  
**CHESS CLUB**  
**TREKKING CLUB**  
**HANDBALL CLUB**  
**YOGA CLUB**  
**TENNIS CLUB**

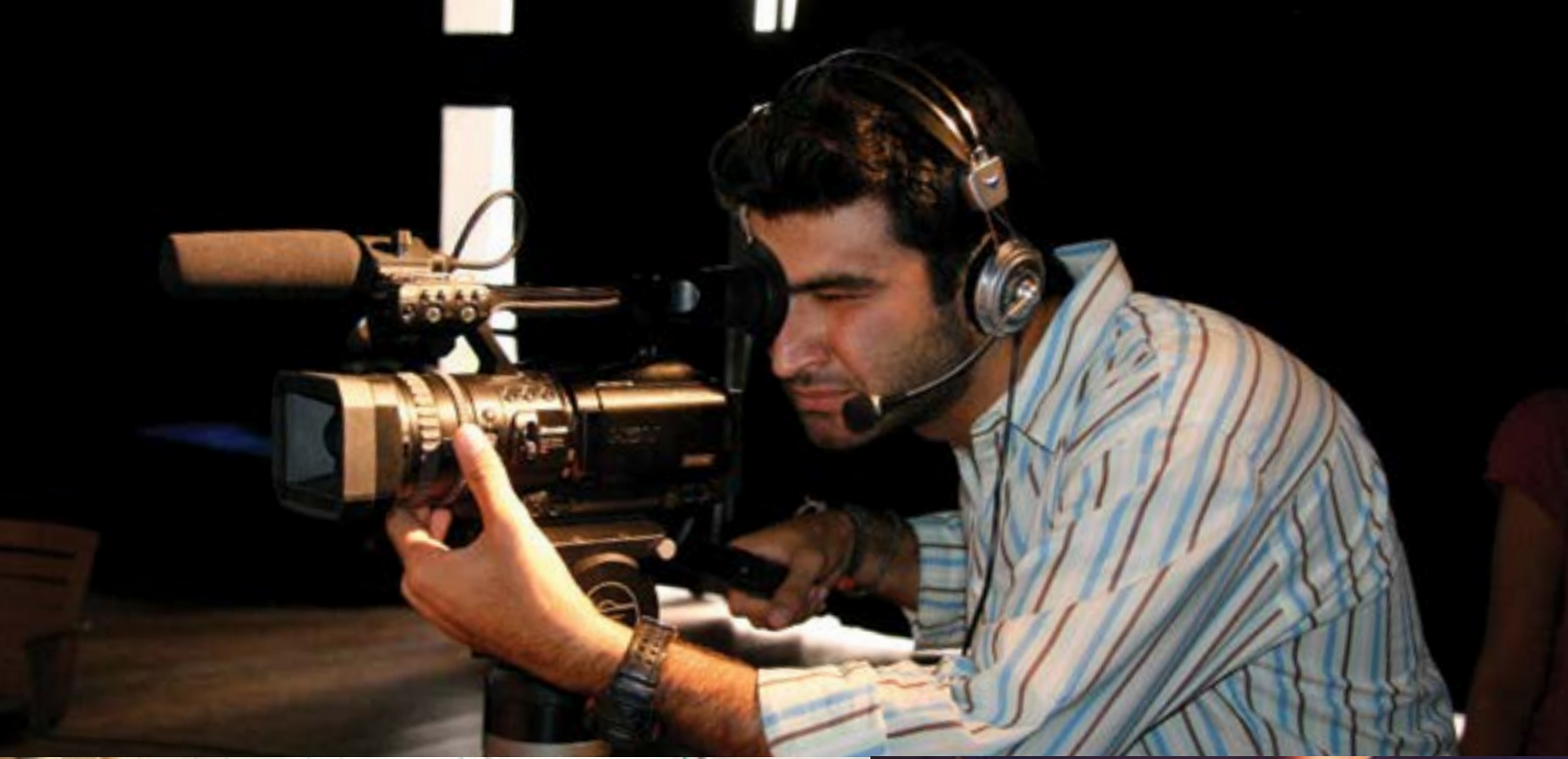
**TABLE TENNIS CLUB**  
**VOLLEYBALL CLUB**  
**ZUMBA CLUB**  
**SWIMMING CLUB**  
**SQUASH CLUB**  
**RUGBY CLUB**  
**KARATE CLUB**  
**FOOTBALL CLUB**  
**FITNESS CLUB**  
**FRISBEE CLUB**  
**THE RUN CLUB**

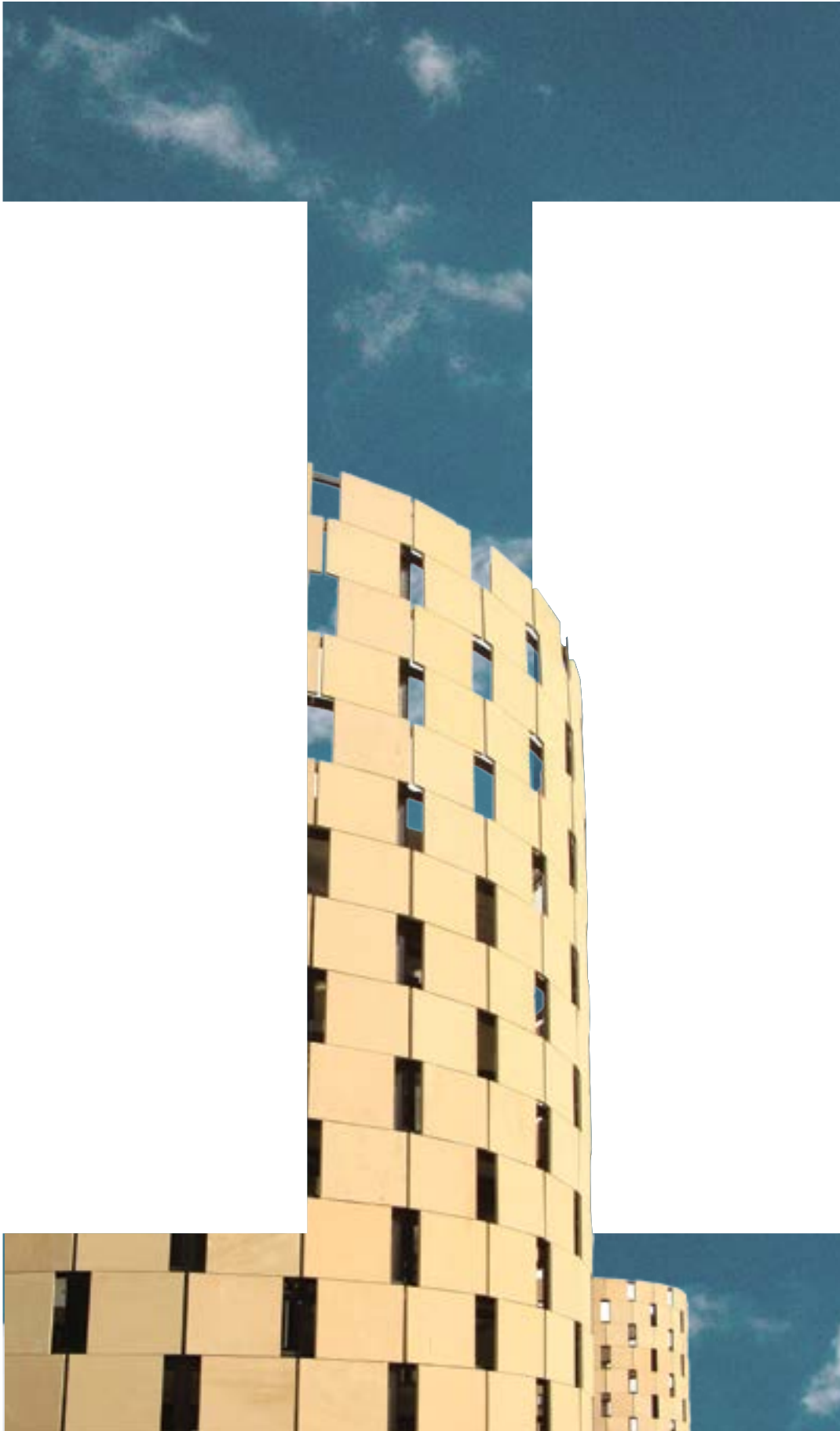
There are also a growing number of cultural clubs promoting a vibrant and engaging student experience. These include:

**FLAME DANCE CLUB**  
**FLAME PHOTOGRAPHY CLUB**  
**FLAME COMMUNITY SERVICE CLUB**  
**THE ELLIPSIS CLUB**  
**QSA CLUB: THE COLLECTIVE**  
**FLAME MUSIC CLUB**  
**THE ENVIRONMENT CLUB**  
**FLAME FASHION FOR ALL CLUB**  
**FLAME PHILOSOPHY CLUB**  
**FLAME ART CLUB**  
**FLAME ASTRONOMY CLUB**  
**FLAME MUN CLUB**  
**THE READING INITIATIVE**  
**FLAME ON BOARD**

**THEATRE CLUB 'NAQQAB'**  
**SUPPORT A CAUSE TEAM (SACT)**  
**ECONOMICS INTEREST GROUP (EIG)**  
**THE STORY PROJECT (TSP)**  
**WONDERS OF WELLNESS (WOW)**  
**MENTAL HEALTH INITIATIVE (MHI)**  
**ANIMAL WELFARE COMMITTEE (AWC)**  
**FLAME ENTREPRENEURSHIP LAB (FEL)**  
**ANIME CLUB**  
**TAMID AT FLAME**  
**FLAME TRAVEL CLUB**  
**FLAME FINANCE AND INVESTMENT CLUB**







# INSPIRING ENVIRONMENT

The state-of-the-art FLAME campus is located in a beautiful, sprawling wooded valley, possessing all elements that are conducive to the honing of the mind, body, and spirit.

The world-class campus is designed to facilitate inspired teaching and research with a vibrant student life. The campus is a combination of thought-provoking designs, embodying nature within man's creation, giving impetus to the ethos of interdisciplinary education.



SCAN FOR A VIRTUAL  
WALKTHROUGH OF THE  
FLAME CAMPUS



# LEARNING SPACES

---

FLAME University fosters intellectual curiosity and habits for lifelong learning. To enable this, dedicated and quiet spaces are provided that encourage self-reflection. These spaces have been made specifically to create an environment conducive to grasping ideas and knowledge.





  
**FLAME**  
UNIVERSITY

Shantiniketan - Auditorium



Shantiniketan - Conference Room







Kabir Recording Studio



## A P J Abdul Kalam - Lecture Hall



## Digital FabLab (Design Lab)







Computer Lab



# SPORTING SPACES

---

Students are provided adequate and equal opportunities to blend sports and fitness into their personal growth and development. Sports inculcate life skills like respect, leadership, resilience, accountability, teamwork, and patience. It fosters a sense of belonging and the spirit of unity. Sports are mandatory for all students.

The state-of-the-art Arjuna Centre for Sports has been built with facilities for over 20 sports, covering indoor as well as outdoor games.





# INDOOR FACILITIES

GYMNASIUM

BADMINTON

BILLIARDS

TABLE TENNIS

CHESS

SQUASH

BASKETBALL

CONDITIONING STUDIO

FITNESS STUDIO

CARROM

THERAPY ROOM

YOGA

TAEKWONDO







# OUTDOOR FACILITIES

CRICKET

FOOTBALL

SWIMMING

TENNIS

HANDBALL

TRACK AND FIELD

VOLLEYBALL

FUTSAL







# RECREATION SPACES

---

The FLAME community is encouraged to take time to rejuvenate and relax.

FLAME supports collaborative discussions in informal settings which helps form bonds and deep friendships. To promote this culture of openness to ideas and thoughts, there are numerous recreation spaces spread all over the campus. The sequencing of spaces fabricates casual encounters with known and unknown faces, instituting the people from various disciplines to interweave and share knowledge - to share life.





## THE KUND

The Kund is where the academic and recreation spaces meet. Apart from serving as a reservoir, the Kund's serenity adds to the beauty of the campus, where students congregate casually.



## THE PLAZA

The Plaza is a confluence of FLAME's infrastructure. It is a great place for the community to come together, collaborate, and build lifelong connections.



## CAFÉS

The numerous cafés on campus are spaces where the community can enjoy a quiet moment alone or spend time together over a cup of coffee and some snacks.





# ACCOMMODATION SPACES

---

All students are mandated to live on campus at FLAME University.

Learning happens as much inside the classroom as outside. A fully residential university has several advantages, mainly improved academic success rates, learning from peers, enhancement of knowledge, improved chances of knowledge advancement, support and mentoring, deeper friendships and connections, and the opportunity to be a part of a vibrant community.

There are multiple housing areas on campus. These areas include student, faculty, and staff housing facilities, as well as guest houses for parents, guests, and participants of executive education programs when they visit campus.

# SUSTAINABILITY. SECURITY. CONVENIENCE.

---

The FLAME University campus has been designed to uphold one of our core values of respecting and maintaining ‘Ecological Balance’. Green campus initiatives, water waste consciousness, biodiversity plantations with local species in landscape planning, sewage treatment plants, planned irrigation, energy conservation, solar installations, VRV air-conditioning systems, natural stone cladding, usage of LED lights, electric vehicles, natural ventilation, natural light, and energy efficiency are some of the environmentally friendly methods used in constructing the campus.

Additionally, safety is never compromised at FLAME. Trained security professionals are on duty around the clock, providing a secure environment for students and teachers alike. CCTV surveillance is present at all key locations and fire safety mechanisms such as fire extinguishers, smoke and heat detectors and evacuation plans are in place as well.

Other facilities on campus include provision stores, ATMs, photocopying facilities, an infirmary, ambulances, and a shuttle-bus service to Pune, a bustling metropolis in itself.







# NURTURING ASPIRATIONS

Every student's journey at FLAME University and beyond is distinct.

We prepare students for life in a participatory, personalized environment, nurturing their individual ambitions and providing a transformational experience.



## FACULTY AND PEER MENTORING

FLAME mentors and advisors guide a student's curiosity to its fullest potential. They are fully invested in the growth of the students. FLAME's Guru-Shishya philosophy assigns mentors to students to help them progress and overcome hurdles in their student lives. A constant feedback loop guarantees a collaborative learning environment, leading to enhanced personal growth and professional development.

**1:11**

**Peer mentor-to-student ratio**

**1:15**

**Faculty mentor-to-student ratio**

## COUNSELLING AND STUDENT WELL-BEING

Student well-being is a priority at FLAME.

A team of trained counselors works with students to help them discover what they need to feel supported, encouraged, and empowered. FLAME strives to provide a safe, confidential, non-judgmental support system so that students can be successful both academically and personally.







## SPECIAL NEEDS ASSISTANCE

FLAME aims to promote an inclusive environment for students with both long-term and short-term special needs.

Special needs students are provided with academic support to help them perform to the best of their abilities. Additionally, they are also provided with logistical support, counseling assistance, performance monitoring assistance, and any other assistance needed to excel at FLAME.

# ACADEMIC RESOURCES

---

Writing and quantitative reasoning are integrated across the curriculum. The Writing Centre, the Q Centre, and the resources at the Vivekananda Library help students cope and excel in their academic work, and strengthen their skill sets.

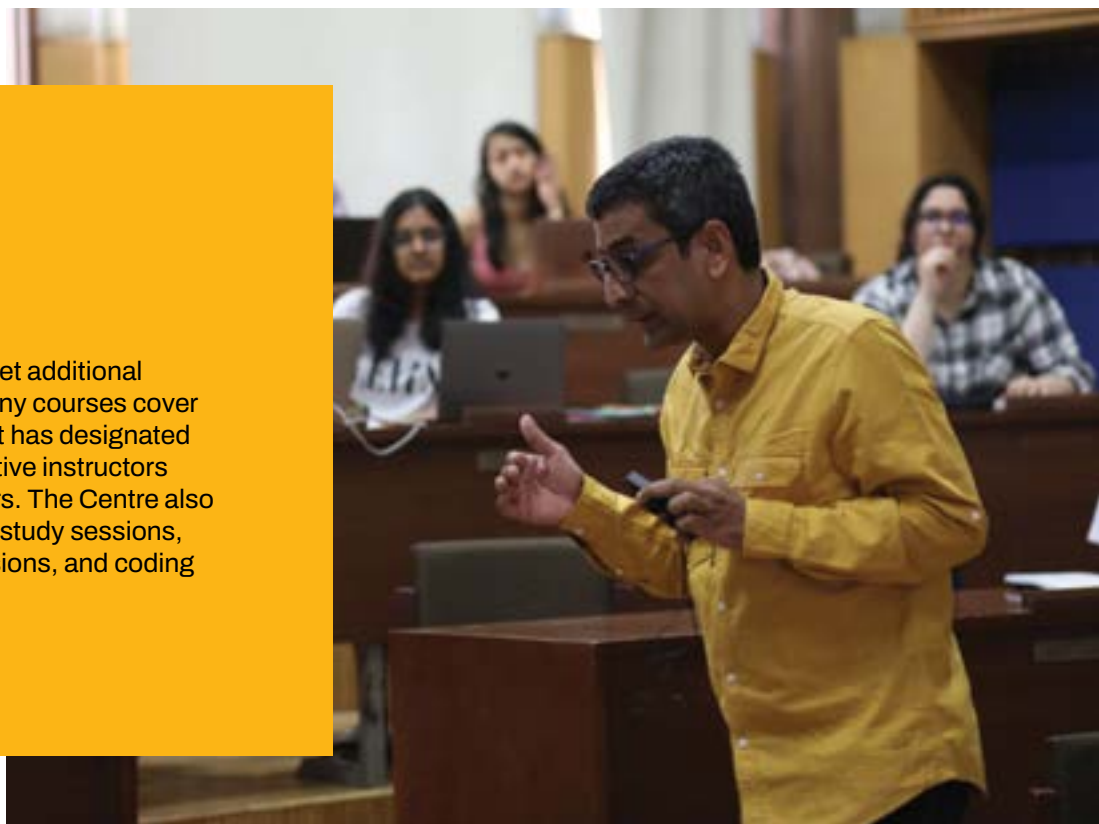


## THE WRITING CENTRE

The Writing Centre encourages students to discuss writing assignments with undergraduate peer tutors. These consultations are holistic, helping students not only excel in curricular terms but also take a step forward in their personal intellectual growth.

## THE Q CENTRE

The Q Centre aims to help students get additional help on quantitative methods that many courses cover and sharpen their quantitative skills. It has designated faculty members, along with quantitative instructors and an empanelled team of peer tutors. The Centre also conducts several activities, including study sessions, workshops, one-on-one tutoring sessions, and coding competitions, among others.





# THE FLAME VIVEKANANDA LIBRARY

The FLAME Vivekananda Library, with its hardware, software, and other allied resources, is one of the finest institutional libraries in the country. Its inviting architecture provides an ambiance that is relaxed but modern and a space that is large yet intimate. The resources available include books on an impressive array of subjects, academic journals, and various digital resources. It houses sufficient reference and reading material for students and faculty from multiple disciplines. Its shelves are adorned with books from the humanities, social sciences, applied sciences, physical and natural sciences, management, media, journalism, literature, environment, religion, and languages, among other subjects.

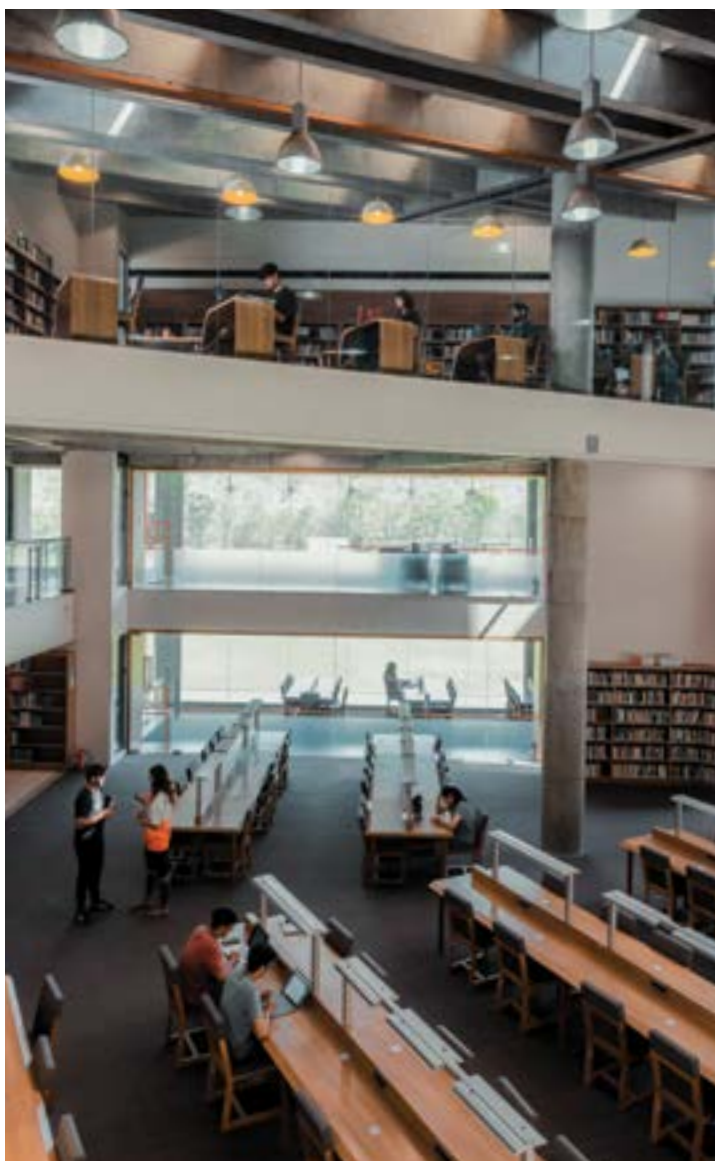
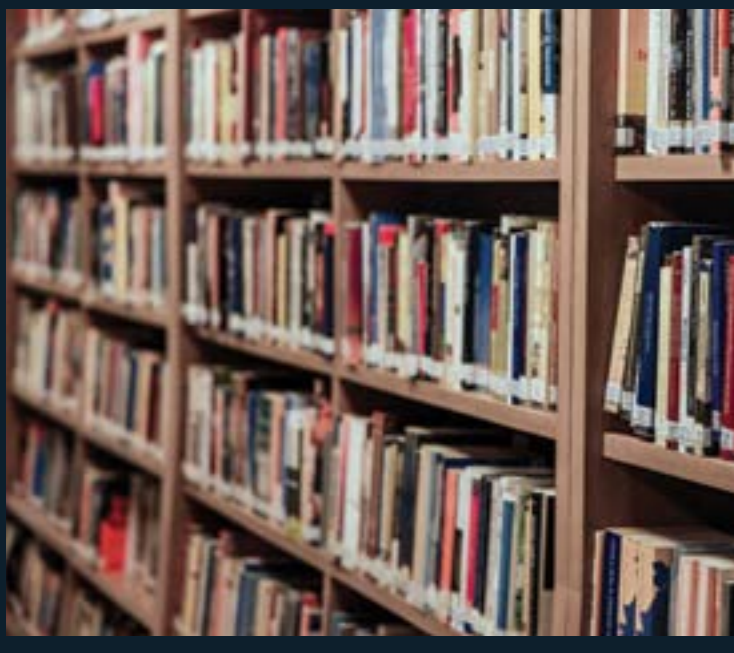
Facilitating learning and research, the computer lab in the library holds various databases and other online resources. The media section of the library comprises of films of Indian and foreign origin and the reprographics section reproduces and preserves critical documents pertaining to institutional records, history, and heritage.

The library is fully automated using KOHA software. KOHA is an enterprise-class integrated library system with comprehensive functionality. It supports full-text searching with enhanced catalog display, which can use content from Amazon, Google, and Open Library, among others. The FLAME Vivekananda Library is also RFID enabled making library transactions seamlessly integrated, faster, and more convenient. Equipped with a “Self Check System”, it aims to enhance member privacy and efficiency.

A noteworthy highlight of the FLAME Vivekananda Library is its association with the Library of Mistakes, Edinburgh. The Library of Mistakes is a charitable venture founded to promote the study of financial history. This is the first-ever international association of the Library of Mistakes. The Library of Mistakes provides resources that allow students, professionals and members of the general public to study financial history to understand how finance has worked, rather than how it should work if key unrealistic assumptions are made. By studying financial history, it hopes to improve financial understanding one mistake at a time.







# CAREER DEVELOPMENT

---

With an education that is personalized, students at FLAME University have diverse career trajectories.

FLAME University's Career Services Office (CSO) and Higher Education Counselling Services (HECS) help students map their majors and minors to a unique career pathway. Each student's interests, abilities, and aspirations lie at the center of the guidance provided at FLAME.

From building resumes to organizing placement-related workshops to providing guidance for higher education opportunities, the CSO and HECS prepare students to build robust profiles for their unique career pathways.

The CSO and HECS also work in collaboration with the Alumni Relations Office to strengthen relationships with alumni and recruiters, thereby giving students equal opportunities to realise their dreams.

**FLAME University's CSO and HECS help students fulfill their ambitions by providing them with the best available employment resources, personalized guidance, and career counseling.**

## **CAREER SERVICES**

The FLAME CSO offers career resources that assist students in making an impact for years to come. Students are nurtured to become leaders and are equipped with the knowledge and skills to be successful in today's interconnected world. Each student's major-minor combination is individually mapped to a distinct professional path that they can chart for themselves. The CSO also helps students perfect their resume and presentation skills and conducts interview workshops, career fairs, and career counseling to prepare them for what the industry seeks. The CSO's placement process involves student training, industry outreach, student profile building, job applications, pre-placement discussions, and job interviews for final selection.



## **EXPLORING HIGHER EDUCATION**

At FLAME, we help students reach their academic and professional goals. Our HECS team helps students prepare for higher education (both in India and abroad) by assisting them in determining the right schools, preparing for entrance exams, writing statements of purpose, and applying for admissions, among other things.



# HIGHER EDUCATION

A snapshot of revered institutions worldwide where FLAME alumni have continued their academic journey



## North America

- Harvard University
- Columbia University
- Yale University
- University of Pennsylvania
- University of Chicago
- The Johns Hopkins University
- University of California - Berkeley
- Northwestern University
- University of Texas
- Duke University
- University of Illinois - Urbana Champaign
- University of California - Los Angeles
- New York University
- Tufts University
- George Washington University
- Babson College
- Parsons School of Design
- Fordham University
- Ohio State University
- University of Southern California
- University of Toronto
- McGill University
- McMaster University
- Ivey Business School

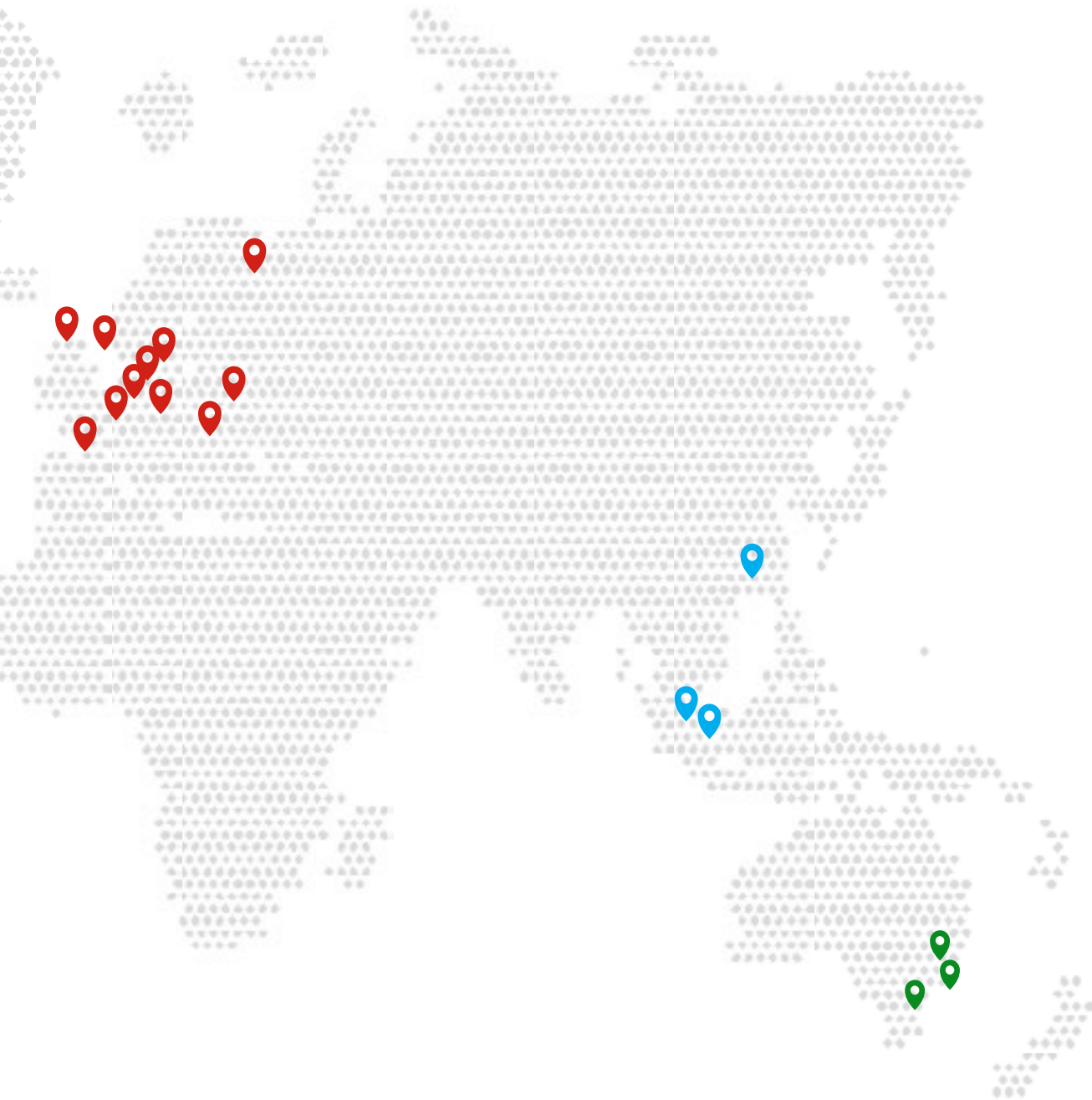
## Europe

- University of Oxford
- University College London
- London School of Economics and Political Science
- King's College London
- University of Manchester
- University of Edinburgh
- University of Warwick
- Trinity College Dublin
- HEC Paris
- Essec Business School
- Frankfurt School of Management
- Central European University

## Asia

- University of Hongkong
- INSEAD
- National University of Singapore
- Singapore Management University





## Australia

- Australian National University
- University of Sydney
- University of New South Wales
- Monash University

*\* For representative purpose only*



# PROFESSIONAL GROWTH

Varied sectors and reputed organizations where FLAME alumni continue to grow professionally

## CONSULTING

Accenture  
Capgemini  
Deloitte  
E&Y  
KPMG  
McKinsey  
PwC

## TECHNOLOGY

Amazon  
BookMyShow  
BYJU's  
Cisco  
Cognizant  
CRED  
Google  
Hewlett Packard  
Hotstar  
IBM  
Infosys  
Intel  
LinkedIn  
Microsoft  
Paytm  
Samsung  
TCS

**FINANCIAL  
SERVICES**

American Express  
Barclays  
BNP Paribas  
BNY Mellon  
Citi India  
Credit Suisse  
CRISIL  
DBS  
Deutsche Bank  
DSP Blackrock  
Franklin Templeton  
Goldman Sachs  
HSBC  
JPMorgan  
Morgan Stanley  
Thomson Reuters  
UBS

**MEDIA**

BBC News  
Bloomberg Quint  
CNBC TV-18  
Conde Nast  
FCB Ulka  
Genesis Burson Marsteller  
Harper Collins  
J. Walter Thompson  
Leo Burnett  
Lowe Lintas  
McCann Erickson  
Ogilvy  
Penguin Random House  
Publicis  
Saatchi & Saatchi  
The Economic Times  
The New York Times

**THINK TANKS**

Carnegie India  
Centre for Policy Research  
DRDO  
NITI Aayog  
World Bank  
United Nations  
World Economic Forum

**CONSUMER**

Hindustan Unilever  
IKEA  
L'Oreal  
Louis Vuitton  
Nestle  
Nike  
Nykaa  
OYO  
Pepsi Co  
Swiggy  
The Walt Disney Company  
Titan  
Uber  
Zomato





# GRATEFUL FOR TODAY

# FOCUSED ON TOMORROW

FLAME University was established with the goal of pioneering liberal education in India — an idea much ahead of its time, going beyond the traditional forms of knowledge and learning.

While our journey so far has been exciting with several accomplishments, we continue to be committed to being an outstanding place of scholarship in the fundamental disciplines of knowledge that reveal not only the workings of human affairs but also the nature of the universe and our place in it.

Rooted in our values of Ahimsa, Guru-Shishya Parampara, Respect for Human Dignity, Humility, and Ecological Balance, we will persistently strive to reimagine the future university.

**EVERLASTING** is a reminder of this promise. Every effort we undertake and every action taken by our students and faculty will result in a lasting connection, memory, and impact throughout their academic journey and after.

## CONTACT US

### Campus Address

FLAME University  
Gat No. 1270, Lavale, Off Pune-Bengaluru Highway, Pune - 412115,  
Maharashtra, India

### Mailing Address

401, Phoenix Complex, Bund Garden Road, Opp. Residency Club,  
Pune - 411001, Maharashtra, India



1800 209 4567



[www.flame.edu.in](http://www.flame.edu.in)



[enquiry@flame.edu.in](mailto:enquiry@flame.edu.in)



[facebook.com/flameuniversity](https://facebook.com/flameuniversity)



[x.com/flameuniversity](https://x.com/flameuniversity)



[youtube.com/flameuniversity](https://youtube.com/flameuniversity)



[instagram.com/flameuniversity](https://instagram.com/flameuniversity)



[linkedin.com/school/flameuniversity](https://linkedin.com/school/flameuniversity)